

# ADVENTURE AWAITS

METROWEST BOSTON

SHOPPING • FOOD/DRINK • FAMILY • ARTS/CULTURE • HISTORY  
BREWERIES • RECREATION • HOTELS • ENTERTAINMENT • FUN







# Stay & Play!

## IN MARLBOROUGH, MASSACHUSETTS

Marlborough has something for everyone, from day trips to weekend getaways, big conferences and sports tournaments, to corporate retreats and small business meetings. The city has the largest number of hotel rooms outside of Greater Boston.

The City of Marlborough offers a wide variety of amenities, world-class hotels, the largest sports complexes and recreational facilities in the state, green spaces, bike trails, beaches, and more. From upscale eateries to casual coffee shops and hometown breweries, it boasts more than 100 fabulous dining establishments.

**Come Stay & Play in Marlborough! You'll have a great experience!**

*visit*  
**marlborough**  
VISIT-MARLBOROUGH.COM

508-229-2010  
info@marlboroughedc.com  
91 Main Street, Suite 204  
Marlborough, MA 01752

**PLAN  
YOUR VISIT  
TODAY.**

- Things to Do
- Local Events
- Eats & Drinks
- Stay Awhile
- Calendar





As the Executive Director of the MetroWest Boston Visitors Bureau and Regional Tourism Council, it is my pleasure to introduce you to our region. Within the pages of this Guide to MetroWest, **you will discover a treasure trove of hidden gems, unique attractions, and vibrant communities that make MetroWest Boston a destination unlike any other.** Located in the heart of Massachusetts, we represent the unique spirit of New England, with easy access to something special for every visitor.

As you peruse the guide, you will find carefully curated itineraries showcasing the very best of what this region has to offer. **Whether you are a history buff, a nature lover, or a culinary enthusiast, our itineraries will guide you through a seamless exploration of our rich heritage, breathtaking parks, and delectable dining scene.** On any given weekend, you will find our region bustling with cultural festivals, Broadway-caliber performances, farmers markets, and attractions to engage the whole family, so be sure to check out our robust online Events Calendar at [www.metrowestvisitors.org/events](http://www.metrowestvisitors.org/events).

Our dedicated team is committed to ensuring that your visit is not only enjoyable, but also tailored to your interests and preferences. **The Trip Planning tool on our website allows you to completely customize your visit and print or share your personalized itinerary.** Feel free to reach out to us at [info@metrowestvisitors.org](mailto:info@metrowestvisitors.org) for fabulous group tour recommendations or additional information you may need to make your stay truly memorable. On behalf of all of us, I extend a warm welcome to you and invite you to explore, indulge, and create unforgettable memories in MetroWest Boston.



Cheers to your adventures,

Erin Elizabeth Lynch, CNP  
Executive Director

## TABLE OF CONTENTS

- 2 20 Things We Love About MetroWest
- 4 "I'm Ready for My Close Up, Mr. DeMille"
- 5 MetroWest by the Numbers
- 6 Come for Work, Stay to Play
- 7 Lodging
- 10 Getting Here and Getting Around
- 12 Shop 'til You Drop!
- 14 Dining & Craft Breweries
- 16 Itineraries in MetroWest:  
History, Arts & Culture, Rainy Day, Outdoors
- 28 Outdoor Recreation Areas
- 31 Itineraries around Metrowest (Hub & Spoke):  
Summer, Fall, Winter, Spring
- 40 Farms & Farmers Markets
- 42 But Wait...There's More!
- 44 Annual Fairs & Festivals
- 46 Event Venues



# metrowestvisitors.org

COVER PHOTOS: Sunrise on the Concord, photo by Azusa Matsubara, courtesy OARs; Indian dancers at the Franklin Cultural Festival, photo by Ryan Osbourne. DESIGN: ninagarfinkle.com

"Adventure Awaits: The Guide to MetroWest Boston" is published by the MetroWest Boston Visitors Bureau, 10 Mechanic Street, Bellingham, MA 02019. 508-434-4433

© 2023-24 MetroWest Boston Visitors Bureau. All rights reserved.

Funded, in part, by the Massachusetts Office of Travel & Tourism

# 20 THINGS WE LOVE ABOUT *MetroWest* BOSTON



# 1

## MetroWest

is built on the traditional homeland of the Nipmuc, Pawtucket, Agawam, Pokanoket, Wôpanâak and Massa-adchu-es-et peoples; artifacts from some of these tribes are at the Framingham History Center.

## Mary and her lamb

The schoolhouse in “Mary Had a Little Lamb” is the charming one-room Redstone Schoolhouse in Sudbury, built 1798.

# 2



# 3

## Shoes

Marlborough became so well known for its shoe manufacturing that its official seal was decorated with a factory, a shoe box, and a pair of boots when the city was incorporated in 1890.

# 4

## Diana Ross

Diana Ross had her first solo concert at Caesar’s Monticello in Framingham after leaving the Supremes in 1970.

# 5

## Draper textiles

Hopedale was home to the Draper Corporation for over 130 years, once the largest maker of textile looms in the U.S.



# 6

## Ben Franklin

Franklin is home to the nation’s first public library, and still houses Ben Franklin’s original book collection.



# 7

## Marathon

Ashland was the original starting point of the Boston Marathon in 1897; the Marathon start line is now in Hopkinton and hosts 30,000 runners each year.

# 8

## John Hancock

The Framingham History Center has documents with John Hancock’s original signature.

# 9

Plymouth Church in Framingham was the site of the first public singing of the Battle Hymn of the Republic, in 1862.



## Tick tock

Henry Warren revolutionized time-keeping with his invention of the electric clock in Ashland in 1918.

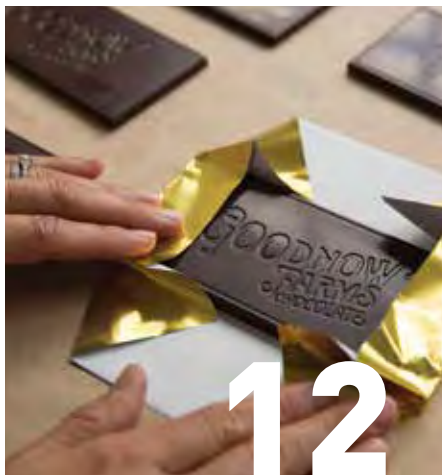
10



## Take me to church

Franklin contains the largest Catholic church in the Boston Archdiocese, St. Mary's Parish, with some 15,000 members.

11



## Chocolate

Sudbury chocolate manufacturer Goodnow Farms received more International Chocolate Awards and Academy of Chocolate Awards than any other maker in North America in 2021.

12

## Oldest Inn

Sudbury is home to the country's oldest operating inn, the Wayside Inn.

13



## Pepperidge Farm

The Pepperidge Farm logo is based on the old Grist Mill in Sudbury.

14

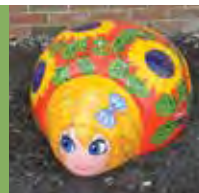
## Goat hikes

You can hike with goats at Chestnut Hill Farm in Southborough!

15

16

The state insect of MA is the ladybug, thanks to a petition by Franklin schoolchildren in 1989.



## Trick or Treat

Dennison Manufacturing Company, based in Framingham from 1897 to 1990, is credited with commercializing Halloween through its creation of Halloween stickers, décor, and other printed items.

18

## Cotton gin

Westborough is the birthplace of Eli Whitney, inventor of the cotton gin, who played a major role in the industrial progression of the nation.

19



## Diversity

We are proud that MetroWest is an inclusive and welcoming community to all! Help support the BIPOC-, woman-, veteran-, disability-, and LGBTQ+-owned businesses listed in our diversity guide, which you can find at the QR code.



20

# “I’M READY FOR MY CLOSE-UP, Mr. DeMille.”



*Knives Out*, photo Claire Folger/Lionsgate



*Julia* Season 1, photo Seacia Pavao/HBO Max

## MetroWest Boston is kind of a big deal.

Our picturesque downtowns and quaint rural roads make for captivating backdrops, and even Hollywood has taken notice. Did you know that our quiet corners have made for some of the most memorable movie and television scenes?

Some of the area’s recent claims to fame include the HBO Max television show *Julia*, based on celebrated chef Julia Child, with scenes filmed in Framingham. *Knives Out*, winner of 52 film awards worldwide, included a scene at Marlborough’s old Registry of Motor Vehicles building,

which doubled as the Norfolk County Medical Examiner’s office, plus the famous car chase goes through downtown Natick. Oh, and the Thrombey’s great gothic revival mansion? The exterior scenes were all filmed on private property in MetroWest too!

Our region also boasts born and bred Hollywood talent! Westborough native Daniel Kwan took home 2023 Academy Awards for Best Picture, Best Original Screenplay, and Best Director for his film *Everything Everywhere All at Once*. Actor Chris Evans (yes, THAT Chris Evans of Captain America fame!) is a Sudbury native who returned to MetroWest to shoot scenes for his TV miniseries *Defending Jacob* in Framingham, Hudson, Natick, and Sudbury in 2020 after filming *Knives Out* here in 2018. Other famous actors from MetroWest include Marcia Cross (*Desperate Housewives*), Callie Thorne (*Necessary Roughness*), Scott Evans (*Barbie*), Joey Graceffa (*The Amazing Race*), and more!

Our home sweet home has a long list of filming credits over the years and boasts a number of award winners and nominees. At left is just a partial list of recent movies and television shows that have featured filmworthy MetroWest Boston.

## TV

2022 *Julia*, Framingham  
2022 *Spirited*, Framingham  
2021 *Dexter: New Blood*, Sherborn  
2020 *Defending Jacob*, Framingham, Hudson, Natick, Sudbury  
2020 *Revenge Prank*, Sudbury  
2020 *The Expecting*, Marlborough  
2019 *Castle Rock*, Hudson  
2018 *A Snow White Christmas*, Sudbury

## FILM

2023 *The Holdovers*, Southborough  
2023 *The Mothership*, Natick  
🏆 2021 *Don’t Look Up*, Framingham  
🏆 2021 *Free Guy*, Framingham  
2021 *The Unholy*, Sudbury  
2020 *I Care A Lot*, Millis, Natick, Wayland  
🏆 2019 *Knives Out*, Marlborough, Natick  
🏆 2019 *Little Women*, Franklin  
2019 *Sound of Metal*, Framingham  
2019 *Eve*, Wayland

🏆 Academy Award nominee



# BY THE NUMBERS



**19**  
**TOWNS**



**417,000+**  
**RESIDENTS**



**47**  
**HOTELS**



**22**  
**MUSEUMS**



**9**  
**SPLASH PADS**



**10**  
**CHOCOLATE SHOPS**



**17**  
**BREWERIES  
WINERIES  
DISTILLERIES**



**7**  
**PERFORMING  
ARTS CENTERS  
& THEATERS**



**9**  
**PICK-  
YOUR-OWN**



**53+**  
**MILES OF  
RAIL TRAILS**



**4**  
**PROFESSIONAL-GRADE  
SPORTS  
COMPLEXES**



**4**  
**CULTURAL  
DISTRICTS**



**30**  
**FARMERS MARKETS  
& FARM STANDS**



**8**  
**STATE PARK  
RECREATION AREAS**



**13**  
**TRAMPOLINE &  
ADVENTURE PARKS**

Metroworks offers modern workspaces with the flexibility and resources to get your work done. Rent space by the hour, day or month.

508-651-1800 • [metroworks.co](http://metroworks.co)

Metroworks Natick Center  
1 South Ave, Natick

Metroworks Natick Common  
31 S. Main St, Natick

# COME FOR WORK,

# STAY TO PLAY

# Play



Here in MetroWest Boston we invite you to enjoy the best of both worlds: work and play. The growing trend known as “bleisure” has spurred a new wave of business trips which incorporate leisure time, either before, during or after the work event. Bleisure is not just a buzzword, but a growing phenomenon that has been boosted by the pandemic and the rise of remote work. According to *Forbes*, bleisure travel is on track to take over traditional business travel in 2023 and beyond. A survey by TravelAwaits found that 89% of people plan to add personal vacation time to their business travel this year.

More and more people are realizing that they can attend a meeting or a conference in a destination and then extend their stay to explore the area, relax, and have fun. So whether you stay to play alone or have your family in tow for a mini-vaca, there is plenty to entertain in MetroWest! From outdoor rec (pg. 24) to indoor fun (pg. 22), from arts & culture (pg. 18) to a tour of our 17 craft breweries, cideries, winery and distillery (pg. 15), there is something for everyone. Be sure to take a wander through

our Cultural Districts (pg. 20), and definitely check out our online event calendar ([www.metrowestvisitors.org/events](http://www.metrowestvisitors.org/events)) if you'd like to take in a show, attend a festival, or find a fun special event.

You will also find a variety of comfortable and professional environments to meet your business needs in the region, both through co-working spaces and business centers at various hotels or at offsite locations like Metroworks. Plus, take advantage of convenient transportation options, such as the commuter rail, MWRTA buses or Logan Express to get around the area or into the city.

Get more out of your business travel. Rejuvenate between meetings at one of our local day spas, catch up with the family while exploring our scenic trails and parks, or plan a team building event at one of our escape rooms, ropes courses, or laser tag arenas. No matter what your interests are, you will find plenty of activities and attractions to fill your leisure time in MetroWest Boston.

**Come for work and stay to play!**



# Lodging

## Discover the endless possibilities of MetroWest Boston's almost six thousand hotel rooms!

From luxurious to budget-friendly, we have the perfect fit for every need, with an impressive array of features, including state-of-the-art fitness centers, indoor and outdoor pools, on-site dining options, and unparalleled service. Many of our properties are also eco-friendly, utilizing energy-efficient technologies and sustainable practices to minimize our environmental impact...so you can rest easy knowing that your stay is not only comfortable, but also environmentally responsible.

Our hotels offer easy access to popular local attractions and activities, so you can make the most of your stay. Whether you're here for a romantic getaway or a family vacation, our properties are equipped to handle any event or gathering with your comfort and convenience a top priority.

Coming for work? Experience the latest technology, including free high-speed Wi-Fi and cutting-edge business centers, to ensure you stay connected and productive during your visit...allowing you more time to play. And at an average savings of \$215 per night for room plus parking over Boston hotels, MetroWest offers big city access with little city prices.

We also make a convenient hub for travelers looking to explore other parts of New England. An easy drive to the mountains of Western Mass or the beaches of Cape Cod, and from the glamour of Boston to the bucolic splendor of New Hampshire and Vermont, our region is an excellent home base for longer vacations.

With our commitment to sustainability and top-notch amenities, the hotels in MetroWest Boston are your home away from home. Book now and discover all that this vibrant region has to offer!



*Aloft Framingham*



*Sheraton Framingham Hotel & Conference Center*



*The Verve Hotel Boston Natick, Tapestry Collection by Hilton*



*Residence Inn by Marriott Boston Natick*



*Warren Conference Center and Inn*



*Hampton Inn Franklin/Milford*



# METROWEST BOSTON

		guest rooms	meeting rooms	onsite dining	gym	pool	pets
ASHLAND	<b>Warren Conference Center and Inn</b> 508-231-3000 warrencenter.com	113	11		•		
	<b>Aloft Framingham</b> 508-309-4183 aloftframingham.com	149	1	•	•	•	•
FRAMINGHAM	<b>Fairfield Inn and Suites Boston/Framingham</b> 508-270-8500 marriott.com/bosfs opening late 2023	75	0	•	•	•	•
	<b>Framingham Inn</b> 508-879-1510 framinghaminn.com	30	0				
	<b>Motel 6 Framingham - Boston West</b> 508-620-0500 motel6.com	106	0				•
	<b>Red Roof PLUS+ Boston - Framingham</b> 508-718-2619 redroof.com	170	0				•
	<b>Residence Inn By Marriott Boston Framingham</b> 508-370-0001 marriott.com/bosfm	125	1		•		•
	<b>Sheraton Framingham Hotel &amp; Conference Center</b> 508-879-7200 marriott.com/bosfs	200	23	•	•	•	•
	<b>TownPlace Suites Boston/Framingham</b> 508-270-8510 marriott.com/bosht opening late 2023	95	0	•	•	•	•
FRANKLIN	<b>Best Western Plus Executive Residency Franklin</b> 508-553-3500 bestwestern.com	100	2		•		•
	<b>Hampton Inn Franklin/Milford</b> 508-520-2999 franklinma.hamptoninn.com	94	2				
	<b>Residence Inn by Marriott Boston Franklin</b> 508-541-8188 marriott.com/bosfr	108	1		•	•	•
HUDSON MARLBOROUGH	<b>Holiday Inn Express Hotel &amp; Suites Boston-Marlboro</b> 978-562-1001 ihg.com	69	1		•		
	<b>Best Western Royal Plaza Hotel &amp; Trade Center</b> 508-460-0700 rplazahotels.com	307	22	•	•	•	•
	<b>Courtyard by Marriott Boston Marlborough</b> 508-480-0015 marriott.com	202	11	•	•	•	•
	<b>Embassy Suites by Hilton Boston Marlborough</b> 508-485-5900 hilton.com	230	5	•	•	•	•
	<b>Extended Stay America Boston - Marlborough</b> 508-490-991 extendedstayamerica.com	135	0				•
	<b>Fairfield Inn &amp; Suites Boston Marlborough/Apex Center</b> 508-720-1500 marriott.com/bosmf	108	1		•	•	•
	<b>Hampton Inn Boston/Marlborough</b> 508-787-9888 hilton.com	142	1		•	•	•
	<b>Hilton Garden Inn Boston/Marlborough</b> 508-251-6706 hilton.com	160	7	•	•	•	
	<b>Holiday Inn &amp; Suites Marlborough, an IHG Hotel</b> 508-481-3000 ihg.com	172	10	•	•	•	
	<b>Hyatt Place Marlborough/Apex Center</b> 508-506-8100 hyattplacemarlbroughapexcenter.com	137	3	•	•	•	•
	<b>Residence Inn by Marriott Boston Marlborough</b> 508-481-1500 marriott.com/bosmb	112	1		•		•
	<b>Residences at Solomon Pond</b> 508-460-1000 residencesatsolomonpond.com	65	5	•	•		•



# HOTELS

		guest room	meeting rooms	onsight dining	gym	pool	pets
MILFORD	<b>Best Western Milford Inn</b> 508-634-2499 bestwestern.com	63	0		•		
	<b>Comfort Inn Boston Milford</b> 508-478-8243 choicehotels.com	89	0		•		•
	<b>DoubleTree by Hilton Hotel Boston - Milford</b> 508-478-7010 hilton.com	177	7	•	•	•	
	<b>Fairfield Inn &amp; Suites by Marriott Boston Milford</b> 508-478-0900 marriott.com/bosnm	73	0		•	•	
	<b>Holiday Inn Express Boston - Milford, an IHG Hotel</b> 508-634-1054 hiexpress.com/milfordma	119	1		•	•	•
	<b>Sonesta Select Boston Milford</b> 508-634-9500 sonesta.com	152	1	•	•	•	•
NATICK	<b>Courtyard by Marriott Boston Natick</b> 508-655-6100 courtyardbostonnatick.com	181	4	•	•		•
	<b>Hampton Inn Boston/Natick</b> 508-653-5000 hilton.com	188	12	•	•		
	<b>Residence Inn by Marriott Boston Natick</b> 508-651-5250 marriott.com/bosrn	136	6	•	•		•
	<b>The Verve Hotel Boston Natick, Tapestry Collection by Hilton</b> 508-653-8800 vervehotelnatick.com	251	12	•	•		•
NORTHBOROUGH	<b>Econo Lodge Inn &amp; Suites</b> 508-842-8941 choicehotels.com	78	0	•			•
SOUTHBOROUGH	<b>Red Roof Inn Boston - Southborough/Worcester</b> 508-481-3904 redroof.com	108	0				•
SUDBURY	<b>Fairfield Inn Boston Sudbury</b> 978-443-2223 fairfieldinnbostonsudbury.com	48	0		•		
	<b>The Inn on the Horse Farm</b> 978-218-8031	3	0				•
WESTBOROUGH	<b>The Wayside Inn</b> 978-443-1776 wayside.org	10	11	•			•
	<b>Courtyard by Marriott Boston Westborough</b> 508-836-4800 marriott.com/bosbr	98	1	•	•		
	<b>DoubleTree by Hilton Hotel Boston - Westborough</b> 508-366-5511 hilton.com 508-366-5511	225	14	•	•	•	
	<b>Extended Stay America Boston Westborough</b> 508-366-6100 extendedstayamerica.com Computer Dr	112	0				•
	<b>Extended Stay America Boston Westborough</b> 508-616-0155 extendedstayamerica.com Connector Rd	92	0				•
	<b>Extended Stay America Boston Westborough</b> 508-616-9213 extendedstayamerica.com East Main St	86	0				•
	<b>Hampton Inn Boston - Westborough</b> 508-329-5570 hilton.com	106	1		•	•	
	<b>Sonesta ES Suites Boston Westborough</b> 508-366-7700 sonesta.com	109	1		•	•	•
	<b>Westborough Inn</b> 508-836-1900 westboroughinn.com	25	0		•		

# Getting here

## AIR

With direct flights from 48 international destinations to Boston's Logan International Airport, as well as hundreds of connecting flights to Providence's T.F. Green International Airport and Worcester Regional Airport, you can get to MetroWest from anywhere in the world!

## BUS

Logan Express offers direct bus service from Logan Airport to the Framingham/Natick border near the Natick Mall, and also serves as a depot for Peter Pan and Greyhound bus lines to other parts of Massachusetts and New England. [www.loganexpress.com](http://www.loganexpress.com)

MetroWest Regional Transit Authority (MWRTA) provides all-day and weekend service to transportation hubs, shopping, and businesses throughout the region. Their CatchConnect program also provides door-to-door shuttle services to attractions in Framingham, Natick, Hudson, and Wellesley, as well as connections to the MWRTA bus lines and the MBTA train stations, providing easy access to all parts of the region. For routes, visit [www.mwrta.com](http://www.mwrta.com).

## TRAIN

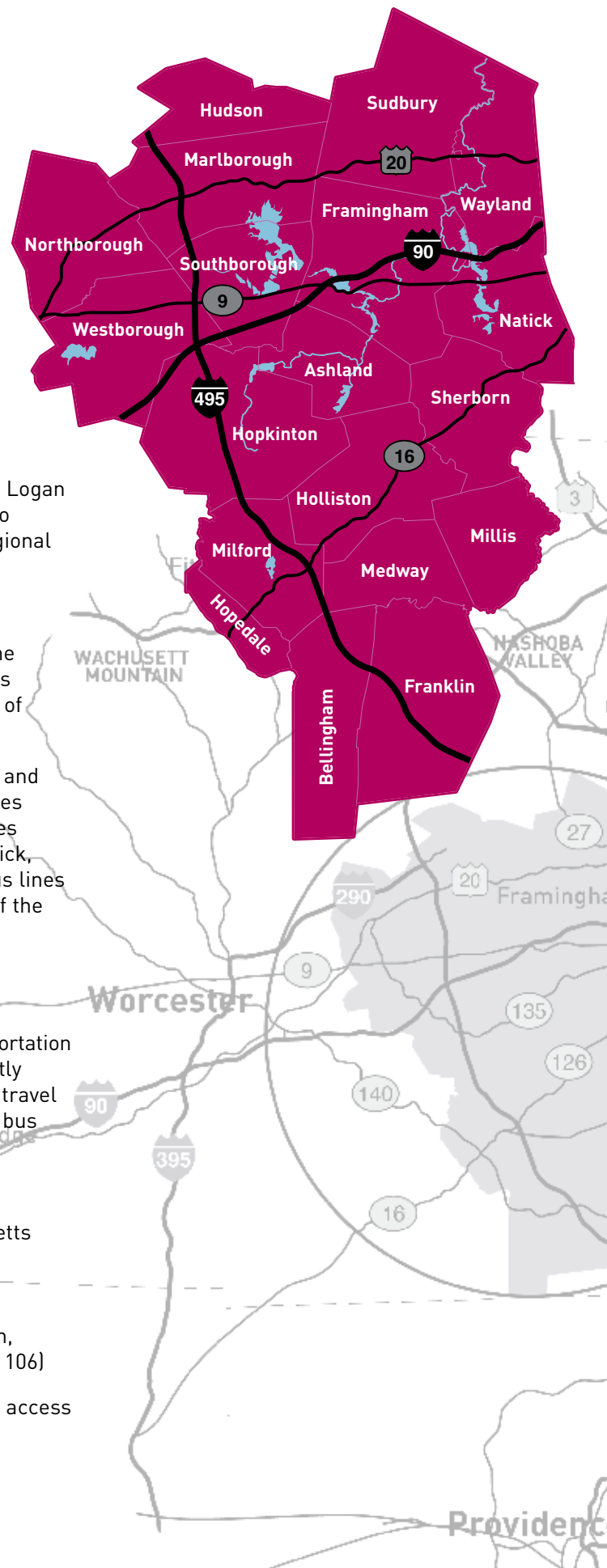
Six of our towns (Natick, Framingham, Ashland, Southborough, Westborough, and Franklin) also offer Massachusetts Bay Transportation Authority (MBTA) commuter rail stations with train service directly into both downtown Boston, MA and Providence, RI. Visitors can travel to other areas of the region from those towns using the MWRTA bus system and CatchConnect. For routes, visit [www.mbta.com](http://www.mbta.com).

## CAR

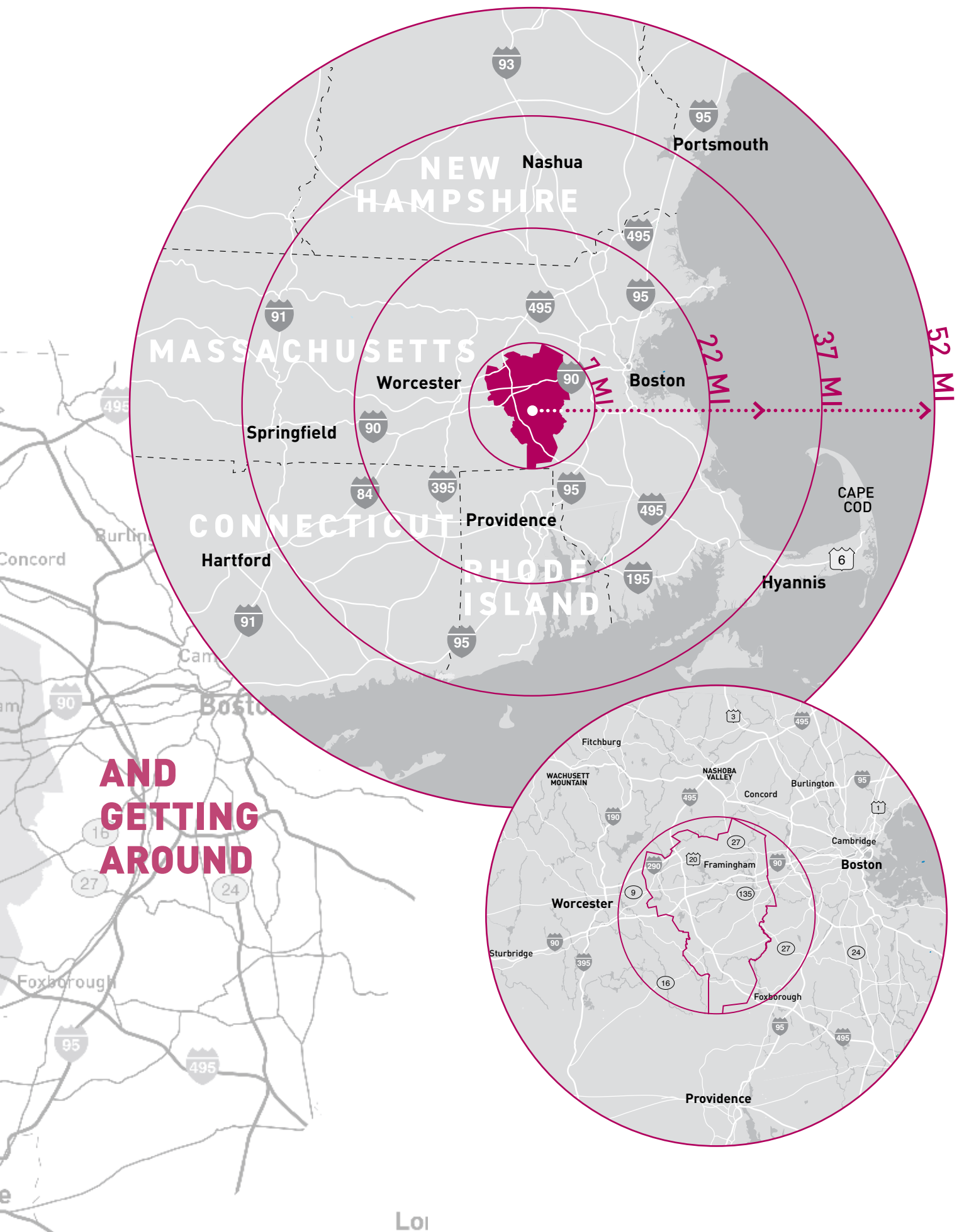
Most visitors to our communities travel by car. Four Massachusetts Turnpike (Route 90) interchanges mean quick, direct access to:

- North Shore and South Shore via Route 95/128 (Exit 123)
- Natick, Framingham, Southborough (Exits 111 and 117)
- Hudson, Marlborough, Westborough, Northborough, Hopkinton, Milford, Medway, Bellingham, and Franklin via Route 495 (Exit 106)

Elsewhere in the region, Routes 135, 9, 20, and 30 provide direct access to many of our smaller towns.







# Shop

## 'TIL YOU DROP

### MADE IN METROWEST



From charming boutiques to the largest shopping mall in New England, the Natick Mall, MetroWest Boston has so many wonderful places to shop...and so many local products to buy there!

#### Goodnow Farms • [goodnowfarms.com](http://goodnowfarms.com)

A 225-year-old Sudbury farm that makes gourmet chocolates on site, including Spiced Apple Cider Dark Chocolate, Black Urfa Chili, Winter Maple Spiced Dark Chocolate, Dark Chocolate Caramelized Onion, and other many other specialty flavors. They start with cacao beans and sugar and perform every step of the chocolate-making process in-house. Listed on Food & Wine's Best Chocolate in America, they have won over 100 international awards, including more International Chocolate Awards and Academy of Chocolate Awards than any other maker in North America. These awards not only recognize the best fine flavor chocolate, but also require entrants to attest that their chocolate sourcing is ethical and sustainable. Goodnow Farms chocolate can be purchased at a variety of retailers in the region, or directly from the Farm, where you can also take a tour of the factory.

#### Molly's Apothecary • [mollysapothecary.com](http://mollysapothecary.com)

Nestled in the charming town of Medway, you will find a lovely shop called Molly's Apothecary, whose bath and skin products are made in-house using the finest essential oils and cosmetic-grade fragrances, freshest butters, and fabulous additives. On a mission to create remedies that cater to those with troubled, sensitive skin, they are constantly searching for new natural, organic, and safe ingredients. They strive to bring exciting products and scents to pamper and soothe and put a little fun back into taking good care of your skin. Stop in to buy a bit of that fun, or even take a class to make your own soap.

## MALLS

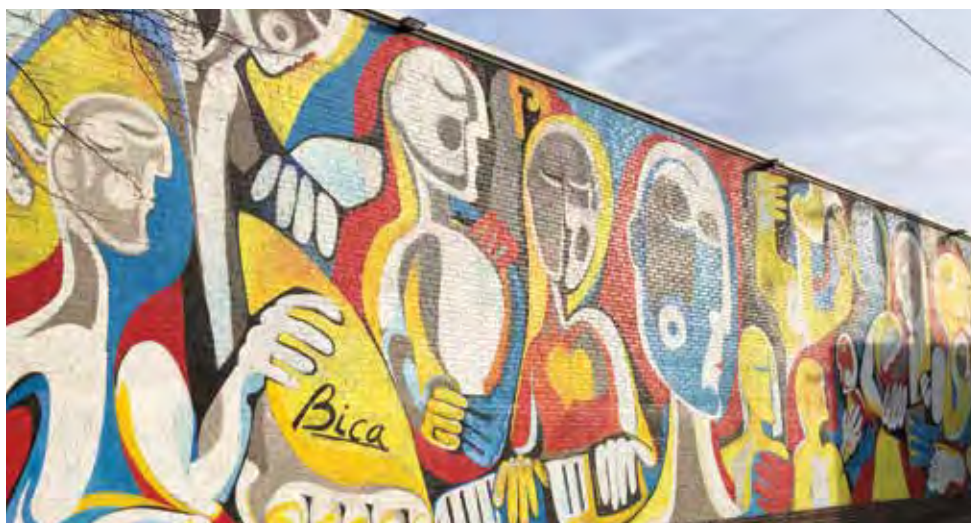
- **NATICK MALL** [natickmall.com](http://natickmall.com)
- **SOLOMON POND MALL** [visitsolomonpond.com](http://visitsolomonpond.com)
- **WRENTHAM VILLAGE PREMIUM OUTLETS** [premiumoutlets.com](http://premiumoutlets.com)
- **PATRIOT PLACE** [patriot-place.com](http://patriot-place.com)



SHOPPING







## ART EVENTS



### Alan Bourgault's • [alanbourgault.com](http://alanbourgault.com)

From cutting boards to Shaker-style furniture, Alan Bourgault's 35-year career as a fine woodworker has resulted in hundreds of gorgeous handmade products that are elegant, functional, and meticulously crafted using New England hardwoods and traditional joinery techniques. Several local shops carry Alan's cutting boards, which are created using different woods and grain patterns with eye-catching contrasts in color and texture that will stand out in your kitchen. Each cutting board is shaped by hand for an elegant contour and balance and finished with a satiny-smooth surface.



Alan is just one of the hundreds of artists in MetroWest whose work can be seen in area galleries, their studios, and at special exhibitions, like those held by **Arts Wayland**, the **Franklin Art Association**, **Marlborough Makers**, the **Paradise City Arts Festival**, **Hopkinton Center for the Arts**, and others, which you can find on our events page. Visit artists in their studio space to see their work and talk to them about their craft at the **Saxonville Mills** (Framingham), **Holliston Mills** (Holliston), **The Studios @ 3 Adams Street** (Natick), and **Zero Empty Spaces** (Natick). Shop local and take a bit of MetroWest back home with you!



## GALLERIES

**PREMIER IMAGE GALLERY** 290 Eliot St, Ashland

**PROJECT B GALLERY** 2 Central St, Framingham

**HUDSON ART & FRAMING** 18 Main St, Hudson

**POST ROAD ART CENTER** 1 Boston Post Rd E, Marlborough

**FIVE CROWS GALLERY & GIFTS** 41 Main St, Natick

**RENJEAU GALLERIES** 79 Worcester St, Natick

**ART & FRAME EMPORIUM** 18 Lyman St, Westborough

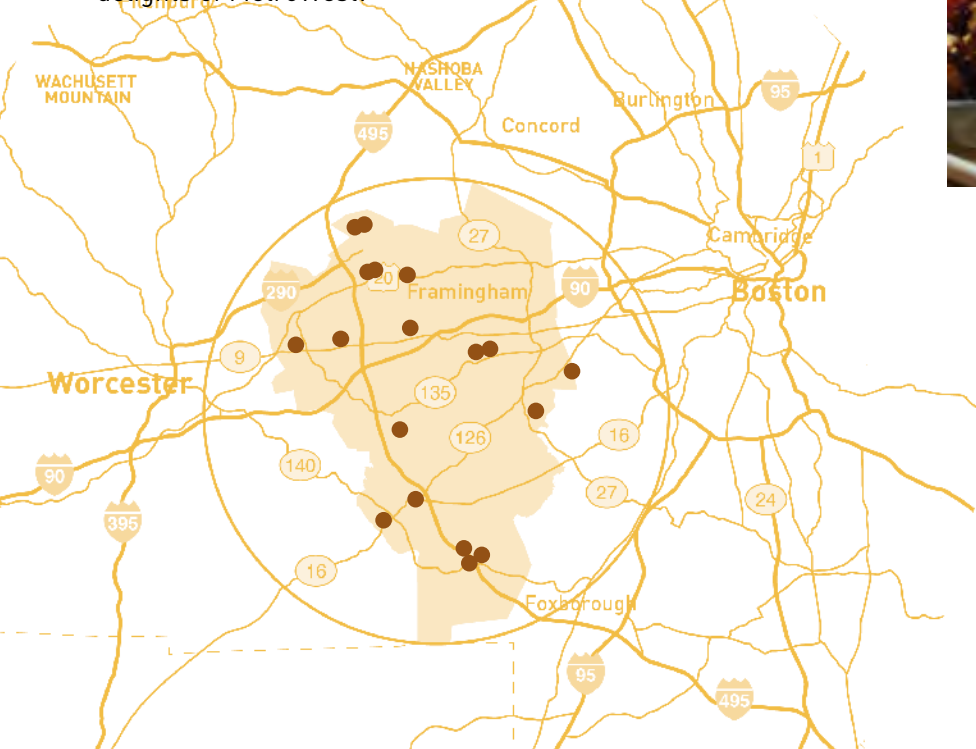
**LEDUC ART & ANTIQUES** 5 Milk St, Westborough

## MetroWest Boston offers a wide variety of restaurants to satisfy every taste and occasion.

From indulgent bakeries to authentic ethnic cuisine to chef-owned farm-to-table establishments, there's something for everyone. Sample bold spices, rich sauces, and exotic flavors all within the heart of Massachusetts.

Want an award-winning craft brewery? Luxe French crêpe? Dramatic hibachi experience? Over-the-top donut? Wicked good clam chowder? Yeah, we've got that...and more!

Check out the Dining section of our website for the most up-to-date information on everything from cozy brunch spots to high-end gastronomic journeys, all crafted from the freshest local ingredients with impeccable style. Don't miss out on the chance to explore the many culinary delights of MetroWest!



# Dining



RESTAURANT



FOOD TRUCKS



LIVE ENTERTAINMENT



BEHIND-THE-SCENES TOURS



TASTINGS





# & Drinking



## HOPS, GRAPES & BARRELS

Choose your own adventure! Spend a day, a weekend, or a week in MetroWest exploring our 17 craft breweries, cideries, winery, and distillery—no matter your taste, we've got you covered!

**67 Degrees Brewing**  
158 Grove St, Franklin  
67degreesbrewing.com



**Clover Road Brewing Company**  
312 Main St, Hudson  
cloverroadbrewing.com



**Cold Harbor Brewing**  
66 Otis St, Westborough  
coldharborbrewing.com



**CraftRoots Brewing**  
4 Industrial Rd, Milford  
craftrootsbrewing.com



**Exhibit 'A' Brewing Company**  
81 Morton St, Framingham  
exhibit-a-brewing.com



**Flying Dreams Brewing**  
277 Main St, Marlborough  
flyingdreamsbrewing.com



**GlenPharmer Distillery**  
860 W Central St, Franklin  
glenpharmer.com



**Jack's Abby Craft Lagers**  
100 Clinton St, Framingham  
jacksabby.com



**La Cantina Winery**  
357 Union St, Franklin  
lacantinawinery.com



**Lookout Farm Brewing & Cider Co.**  
89 Pleasant St, South Natick  
lookoutfarm.com



**Lost Shoe Brewing**  
19 Weed St, Marlborough  
lostshoebrews.com



**Medusa Brewing Company**  
111 Main St, Hudson  
medusabrewing.com



**Owen O'Leary's**  
50 Turnpike Rd, Southborough  
17 Connector Rd, Westborough  
owenolearys.com



**Start Line Brewing Co.**  
151R Hayden Rowe St, Hopkinton  
startlinebrewing.com



**Stormalong Cider**  
12 Sewall Brook Ln, Sherborn  
stormalong.com  
*Retail only*

**Strong Side Brewing**  
strongsidebrewing.com  
*On tap in area restaurants only, check website for details*

**Tackle Box Brewing Company**  
416 Boston Post Rd East, Marlborough  
tackleboxbrewing.com



# DAY 1

## 1 American Heritage Museum

Start your tour in the depths of a WWI trench listening to a nurse's first-hand account from the Front while bombs explode above you. The Heritage's astounding collection of historic aircraft, tanks, armored vehicles, classic automobiles and rare relics from the Revolutionary War through WWII to today includes immersive exhibits, living history events, and over a dozen one-of-a-kind artifacts.

978-562-9182 • 568 Main St, Hudson  
americanheritagemuseum.org



# History Lovers



## 2 Less Than Greater Than

For lunch, visit an old Prohibition-era speakeasy disguised as a cobbler shop. A mysterious, intriguing experience with handcrafted classic cocktails and innovative boundary-pushing cuisine in a hidden restaurant (can't find it? Ask for the secret door in the adjacent New City Microcreamery!)

978-333-714 • 28 Main St, Hudson  
lessthangreaterthan.com

## 3 The Wayside Inn

Explore the historic buildings of the oldest continuously operating inn in the United States, including the early 1800's Old Barn, displaying antique coaches, farming tools and other artifacts; the Grist Mill, a reproduction of the 1700's original built in 1929 by Henry Ford, founder of Ford Motors; the Redstone Schoolhouse, a charming one-room schoolhouse built in 1798 featured in the poem "Mary Had a Little Lamb"; as well as the Martha-Mary Chapel, Ice House, Gate House and beautiful grounds. Stay for a delicious gourmet meal in their historic dining room.

978-443-1776  
72 Wayside Inn Rd, Sudbury  
wayside.org



- GORE PLACE [goreplace.org](http://goreplace.org)
- OLD STURBRIDGE VILLAGE [osv.org](http://osv.org)
- WORCESTER ART MUSEUM & THE HIGGINS ARMORY COLLECTION [worcesterart.org](http://worcesterart.org)

*nearby*

**STAY**

**FAIRFIELD INN BOSTON SUDBURY**  
**SHERATON FRAMINGHAM HOTEL & CONFERENCE CENTER**  
**RESIDENCE INN BY MARRIOTT BOSTON NATICK**



- A THE FARMER'S DAUGHTER:** 534F Boston Post Rd, Sudbury  
**B AOI JAPANESE RESTAURANT:** 855 Worcester Rd, Framingham  
**C 110 GRILL:** 1 Lumber St, Hopkinton



## DAY 2

### 4 Framingham History Center

This astonishing collection of 19,000+ artifacts includes pieces of enormous importance, such as John Hancock's signature, two of only five suffragette pins left in existence, American Revolution tune books, and more, many showcasing the town's deep and influential involvement in abolitionism and the Civil War.

**508-626-9091 • 3 Oak St, Framingham**  
[framinghamhistory.org](http://framinghamhistory.org)

### 5 Plymouth Church

Look diagonally across the Common when you leave the History Center to see Plymouth Church. The Framingham Anti-Slavery Society was founded here in 1837 and the church was the site of the first public singing of the Battle Hymn of the Republic, in 1862.

**87 Edgell Rd, Framingham**

### 6 Natick Historical Society & Museum

The collection includes rare books, household treasures, historical prints, and memorabilia of Natick's famous abolitionists, including Harriet Beecher Stowe and Henry Wilson, Vice President to Ulysses S. Grant. The Society also offers fascinating historical walking tours.

**508-647-4841 • 58 Eliot St, Natick**  
[natickhistoricalsociety.org](http://natickhistoricalsociety.org)

### 7 Franklin Public Library

The citizens of Franklin, MA once asked Benjamin Franklin, their famous namesake, if he would donate a bell for the town's church; instead, he gifted them with 116 books that became the core of the first public library in America. You can still see the books in the town's library.

**508-520-4941 • 118 Main St, Franklin**  
[franklinma.gov/franklin-public-library](http://franklinma.gov/franklin-public-library)

### 8 Franklin Historical Museum

See charming relics of the town's storied past, including antique furniture, clothing, tools and household objects, and an enormous collection of old photographs.

**508-446-1138 • 80 W Central St, Franklin**  
[franklinmuseum1778.com](http://franklinmuseum1778.com)

### 9 GlenPharmer Distillery

Housed in the historic granite buildings of the Brookdale Mill, c. 1883, this premier destination distillery, restaurant, and tasting room offers behind-the-scenes tours as well as creative, chef-inspired cuisine that embraces the intersection of fine food and craft spirits.

**508-528-4000 • 860 W Central St, Franklin**  
[glenpharmer.com](http://glenpharmer.com)

## DAY 1

### 1 Elsie Kaye Glassworks

Try a flameworking class to make your own glass beads or silver jewelry, then wander the beautiful gift shop for home décor, accessories and more.

508-329-1605 • 3 Union St #2, Westborough  
elsiekaye.com



# Arts & Culture

### 2 Muse Paintbar

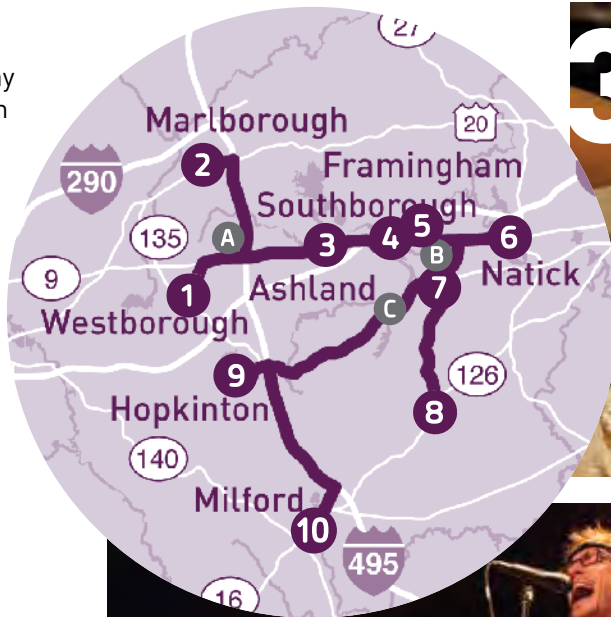
Get creative! Paint and sip the afternoon away —no art experience required, just follow along with their step-by-step instructors.

888-607-6873 • 115F Apex Dr, Marlborough  
musepaintbar.com

### 3 Culinary Underground

From Mexican taqueria to homemade pasta, patisserie to pierogies, try your hand at any cuisine in these cooking classes, for kids and adults. Register early—they fill fast!

508-904-6589 • 21 Turnpike Rd, Southborough  
culinaryunderground.com



## DAY 2

### 4 "Many Cultures, One Heart"

Go on a scavenger hunt to find the 32 heart sculptures representing the diversity of Framingham, with work by artists of many races, religions, and communities. Each heart's plaque includes a QR code linking to an artist's video of their personal stories.

Framingham Centre Common Cultural District  
Map: framinghamcentrecommon.org

### 5 Danforth Art Museum

This jewel box museum houses 3,500+ works of art from the 18th century to today, including the largest collection by 20th c. sculptor Meta Vaux Warrick Fuller.

508-215-5110 • 14 Vernon St, Framingham  
danforth.framingham.edu



STAY

ALOFT FRAMINGHAM

EMBASSY SUITES BY HILTON BOSTON MARLBOROUGH

THE VERVE HOTEL BOSTON NATICK, TAPESTRY COLLECTION BY HILTON



- **CONCORD MUSEUM** [concordmuseum.org](http://concordmuseum.org)
- **DECORDOVA SCULPTURE PARK AND MUSEUM**  
[thetrustees.org/decordova](http://thetrustees.org/decordova)
- **CHARLES RIVER MUSEUM OF INDUSTRY & INNOVATION**  
[charlesrivermuseum.org](http://charlesrivermuseum.org)



2

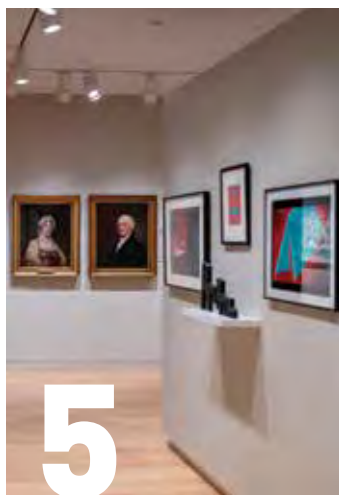
## 6 Lightmoon Candles

Create your own soy candle in their candlebar, with fragrances, dried flowers, crystals, and other surprises. While it's curing, head to **Zero Empty Spaces** ([zeroemptyspaces.com](http://zeroemptyspaces.com)) to see the artists' studios, watch them work, and shop their wares.

**781-552-3125 • Natick Mall, 1245 Worcester St, Natick**  
[lightmooncandles.com](http://lightmooncandles.com)



4



5

## 7 ātac: downtown arts + music

From plays to live music to comedians, there is always something going on at ātac! Check the schedule, and head to a show!

**508-405-2787 • 160 Hollis St, Framingham**  
[www.atac160.org](http://www.atac160.org)

## DAY 3

## 8 Cheryl Cohen Mosaics Art Center

Take a unique mosaic art class and peruse Cheryl's gallery of beautiful home décor and jewelry, then head next door to the **Quilling Card & Gallery** ([quillingcard.com](http://quillingcard.com)) to see gorgeous handcrafted quilled cards, stationery, art, lacquerware, bamboo bags, and scarves.

**508-612-4183 • 360 Woodland St, Holliston**  
[cherylcohenmosaics.com](http://cherylcohenmosaics.com)



6

## 9 The Piano Museum

Make an appointment to see this collection of historic pianos, from a 29" miniature grand, to an 1830 English upright with a curved keyboard, to a Lindeman Boat Piano whose "keybed" folds to fit on a clipper ship.

**508-435-5191 • 6 Oakhurst Rd, Hopkinton**  
[pianomuseum.org](http://pianomuseum.org)



9



10

## 8 Claflin Hill Symphony Orchestra

Enjoy a symphony, chamber music, or jazz concert during the season, or a free outdoor family concert during the summer. See our event calendar for tickets and locations.

**508-478-5924 • Milford**  
[claflinhill.com](http://claflinhill.com)

## EAT

- A EL BASHA** 2 Connector Rd, Westborough
- B JACK'S ABBY CRAFT LAGERS** 100 Clinton St, Framingham
- C PROVISIONS TRADING COMPANY** 1 W Union St Suite 205, Ashland





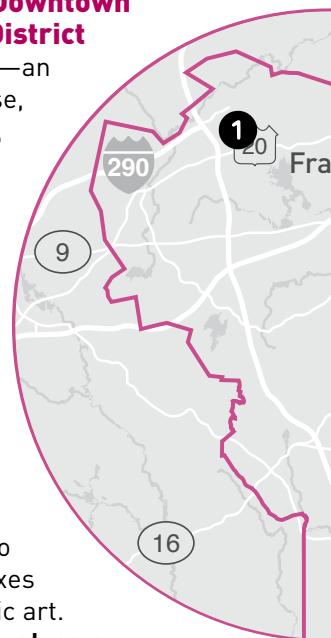
# Cultural & PUBLIC

Massachusetts' state-designated Cultural Districts are walkable areas with a high density of arts entities. There are only 55 such Districts in the state; we are proud to have four in MetroWest Boston. Make plans to visit each for a wonderful day of fun!

## 1 Marlborough Downtown Village Cultural District

This District is the "cultural heart" of the city—an architecturally attractive, ethnically diverse, and inviting area easily accessible by bus, car, bike, and foot. The many steeples and spires of City Hall and area churches create a skyline visually unaltered since 1905. The Marlborough Historical Society's unique "Museum in the Streets" self-guided walking tour features 24 panels of archived photographs and info about the city's history. The Cultural District is home to the annual Brazil Fest, Food Truck & Arts Festival, Greek Festival, Marlborough Classic Car Show, a summer concert series, and New England's largest Labor Day parade and Bed Race. Be sure to check out the District's painted electrical boxes and other public art.

[visit-marlborough.com](http://visit-marlborough.com)



## 2 Franklin Cultural District

The Franklin Cultural District is home to the nation's first public library, the Franklin Historical Museum, Dean College School of the Arts, The Black Box theater, a variety of restaurants and boutiques, and over 25 other performing, visual arts and dance studios and associations. In addition, the District's plethora of public art includes the Franklin Sculpture Park; murals in the District's alleys; 25 individually-decorated ladybug statues (pick up a map to find them all!); and a new series of murals on electrical boxes...plus we've heard the fire hydrants are up next! Each year the Cultural District hosts the Harvest Festival, Strawberry Stroll, Celebrate with Pride festival, a multi-day 4th of July celebration with carnival, concerts, and fireworks, and a summer concert series, plus the Franklin Farmers Market, with local farms, craft and other vendors, live music, and food trucks.

[franklinculture.org](http://franklinculture.org)



# Districts

## ART

### 3 Framingham Centre Common Cultural District (FCCCD)

This Cultural District includes two local historic districts and a National Register of Historic Places District—Framingham's first meetinghouse was built here in 1698, and the town hall in 1834. Today the area is a vibrant mix of residential neighborhoods, restaurants and small businesses, and religious and non-profit institutions.

District anchors include Framingham State University, the Danforth Art Museum, and the Framingham History Center. Centre Common is home to the city's huge weekly farmers market, as well as the site of many fairs, festivals, and a summer concert series. The FCCCD's "Many Cultures, One Heart" public art project includes 32 uniquely-decorated heart sculptures installed citywide representing Framingham's racial and cultural diversity. Visit their website to download a map for a fun scavenger hunt!

The city is also home to a variety of murals by acclaimed contemporary artists.

[framinghamcentrecommon.org](http://framinghamcentrecommon.org)

### 4 Natick Center Cultural District

The Natick Center Cultural District's majestic neo-gothic architecture serves as a visually impressive backdrop for the cultural offerings surrounding the town common. The Center for Arts in Natick (TCAN), housed in a c. 1875 fire station, is a premier performing arts center and an anchor of the District, which is also home to over 100 working artists and dozens of independently-owned restaurants and boutiques. The quintessentially New England common provides ample green space and a gazebo for public concerts and festivals, including Art in the Park, ArtWalk open studios, Earth Day, Holi Festival, Juneteenth Festival, Multicultural Day, a Holiday Lighting and Stroll, and Natick Nights, a weekly summer arts and cultural event with vendors and performers. The District is famous for a vast array of public art including murals, mosaics, painted electrical boxes, temporary installations and more.

[natickcenter.org](http://natickcenter.org)





## DAY 1

### 1 Earth & Aerial Yoga

Both kids and adults can take a one-of-a-kind aerial yoga class (flips & tricks, anyone?), before wandering the charming shops and boutiques of downtown Hudson.

**978-257-0075 • 43 Broad St Suite B307, Hudson**  
[earthandaerialyoga.com](http://earthandaerialyoga.com)



# Rainy Day

### 2 Trombetta's Farm

An inventive mix of plant nursery, indoor 0, mini-golf course & homemade ice cream makes this a unique (and fun!) stop on a rainy day.

**508-485-6429 • 655 Farm Rd, Marlborough**  
[trombettasfarm.com](http://trombettasfarm.com)

### 3 Duck Soup

Take a fun kid's or adult's cooking class at Duck Soup, followed by a gander (see what we did there?) of their gorgeous handmade home and kitchen products, specialty foods, and more.

**978-443-3825 • 365 Boston Post Rd, Sudbury**  
[quackquackquack.com](http://quackquackquack.com)



*nearby*

- **THE BEACH HOUSE** [beachhouseboston.com](http://beachhouseboston.com)
- **DISCOVERY MUSEUM** [discoveryaction.org](http://discoveryaction.org)
- **AN UNLIKELY STORY** [anunlikelystory.com](http://anunlikelystory.com)

- A DAVE & BUSTER'S** 1235 Worcester St Suite 3201, Natick
- B FRESS CAFÉ** 82 Concord St, Framingham
- C PLUM TOMATO PIZZERIA** 108 Mechanic St, Bellingham

**EAT**





## STAY

**FAIRFIELD INN & SUITES BY MARRIOTT BOSTON MILFORD**  
**HILTON GARDEN INN MARLBOROUGH**  
**COURTYARD BY MARRIOTT BOSTON NATICK**

## DAY 2

### 4 Jam Time / Natick Mall

Head to Jam Time's Natick Play for drop-in playtime for the littles, followed by a wander of the interesting and high-end shops at the Natick Mall.

**508-213-1711 • 1245 Worcester St, Natick**  
[jamtime.com](http://jamtime.com)

### 5 Level99

Put your mind to the test at Level99, a sprawling real-life game world with over 40 rooms of physical and mental challenges (plus great food and craft brews!).

**617-865-8599 • 1235 Worcester St, Natick**  
[level99.com](http://level99.com)

### 6 Modelville Hobby

Try slot car racing! Modelville Hobby rents everything you need, and offers 4 different racetracks.

**508-881-7616 • 280 Eliot St, Ashland**  
[modelvillehobby.com](http://modelvillehobby.com)

### 7 Hopkinton Center for the Arts

Catch a show at the Hopkinton Center for the Arts, where you can see great plays, musicals, concerts, art exhibitions, dance performances, and much more.

**508-435-9222 • 98 Hayden Rowe St, Hopkinton**  
[hopartscenter.org](http://hopartscenter.org)

## DAY 3

### 8 PiNZ Bowl

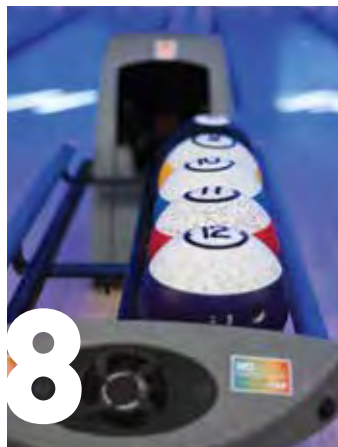
With 16 bowling lanes, laser tag, axe throwing, virtual reality games, and arcade, PiNZ offers something for everyone!

**508-473-6611 • 110 S Main St, Milford**  
[pinzbowl.com](http://pinzbowl.com)

### 9 Urban Air

Wear everyone out with Urban Air's trampolines, battle beam, Warrior Course, Sky Rider, Drop Zone, ropes course, trapeze, and climbing wall.

**508-232-4604 • 189 Mechanic St, Bellingham**  
[urbanair.com](http://urbanair.com)





## DAY 1

### 1 Marlborough Country Club

This stunningly beautiful private golf course allows the public to play on Mon and Tues.  
**508-485-1660 • 200 Concord Rd, Marlborough**  
[marlboroughcc.com](http://marlboroughcc.com)

### 2 Ward Park

Discover Ward Park's numerous offerings for outdoor fun, including pickleball and tennis courts, a playground, wading pool, skate park, and BMX trails.  
**508-624-6925 • 57 Orchard St, Marlborough**  
[visit-marlborough.com/splash-around](http://visit-marlborough.com/splash-around)

### 3 Garden in the Woods

Explore the beauty of New England wildflowers at Garden in the Woods, a place visitors often describe as magical. The Garden's 45 acres were sculpted by retreating glaciers into eskers and steep-sided valleys, with a brook, pond, and wetlands that showcase native plants of the region.  
**508-877-7630 • 180 Hemenway Rd, Framingham**  
[nativeplanttrust.org/visit/garden-woods](http://nativeplanttrust.org/visit/garden-woods)

# THE Outdoors IS CALLING YOUR NAME



**RED ROOF PLUS+ BOSTON – FRAMINGHAM**  
**HAMPTON INN BOSTON/NATICK**  
**SONESTA SELECT BOSTON MILFORD**

**STAY**







- A FIREFLY'S BBQ:** 350 E Main St, Marlborough
- B FRAMINGHAM STATION BRAZILIAN STEAKHOUSE:** 417 Waverly St, Framingham
- C HERITAGE OF SHERBORN:** 33 N Main St, Sherborn

**EAT**



## DAY 2

### 4 Sudbury River

Kayak, paddleboard, or hike along the scenic Sudbury River, starting at the Carol Getchell Trailhead and heading north to Heard Pond, a location lush with vegetation and excellent for birding. The river basin's unique geography and geological formations provide a landscape bursting with wildlife.

**56 Little Farms Rd, Framingham**  
[sudbury-assabet-concord.org](http://sudbury-assabet-concord.org)

### 5 Putts & More

A great place for a friendly (or highly competitive!) game of mini golf, plus a splash pad, jumping pillow, and snack bar.

**508-561-2902 • 750 Concord St, Holliston**  
[puttsandmore.com](http://puttsandmore.com)

### 6 Boston Paintball

Challenge your friends at the newest, most versatile movie-set style paintball facility on the East Coast, with both indoor and outdoor fields open year-round.

**508-879-6621 • 120 Pond St, Ashland, MA**  
[bostonpaintball.com](http://bostonpaintball.com)

## DAY 3

### 7 Cochituate State Park

Rent a kayak, canoe, pedal boat, paddleboard, or sailboat to take out on the lake, swim, fish, wander the hiking trails, or enjoy a meal at one of the picnic areas of this beautiful park.

**508-653-9641 • 43 Commonwealth Rd, Natick**  
[mass.gov/locations/cochituate-state-park](http://mass.gov/locations/cochituate-state-park)

### 8 Baby Goats Yoga at Happy Goats Farm

During this hilarious yoga class (taught by certified instructors), baby goats will snuggle up to you, jump on you, and sometimes gently nibble your clothes.

**617-272-0170 • 400 Norfolk St, Holliston**  
[happygoatsfarm.com](http://happygoatsfarm.com)

### 9 Dacey Field Disc Golf

Try your hand at a round of disc golf on this highly-rated 18-hole course with a babbling brook running through it.

**508-520-4904 • 700 Lincoln St, Franklin**  
[franklinma.gov/recreation-department/pages/dacey-field-disc-golf](http://franklinma.gov/recreation-department/pages/dacey-field-disc-golf)

*nearby*

- **BOUNDLESS ADVENTURES**  
[boundlessadventures.net](http://boundlessadventures.net)
- **THE GARDEN AT ELM BANK**  
[masshort.org](http://masshort.org)
- **SOUTHWICK'S ZOO**  
[southwickszoo.com](http://southwickszoo.com)







**Rail trails are abandoned railway beds transformed into outdoor recreation paths that are often handicap-accessible. Popping up all over Massachusetts, with over 53 miles in MetroWest alone, they offer wonderful biking and walking for all ages and mobility levels. Outdoor enthusiast Marjorie Turner Hollman, author of *Easy Walks*, shares her experiences on one of these trails:**

"Summertime in MetroWest means grabbing our bikes and heading to the Upper Charles Trail in Holliston. We gather and set up our bicycles in the parking area before pedaling off, and are soon gliding through the Phipps Tunnel. Half the fun is creating echoes as we pass. The sound of bike bells and cheerful voices bounce off the walls where trains once squeezed through.

"The rail trail is also great for autumn leaf-peeping. The blazing reds of swamp maples, yellows of birches, and bronze leaves of oaks glow in the sunlight before they drop their foliage onto the path. The rustle of feet scuffing through fallen leaves is all part of the characteristic sights and sounds of fall in New England.

"Winter on the trail offers beautiful views after a snow fall, and the much-anticipated annual New Year's Eve celebration. Volunteers toss wood onto bonfires that flicker along the edge of the trail, urging revelers to grab a stick and roast marshmallows over the flames.



# Rail Trails





Community groups gather in the tunnel to offer hot chocolate and hot dogs to visitors as they stroll by, greeting old friends and making new ones.

"Local wildlife is more active alongside the trail in springtime. The northern end, near the Sherborn town line, offers some great spots to view nesting herons in their wetland rookery. The path crosses ponds, while streams flow underneath, with great bird-watching opportunities. Beavers and muskrats are most active at dawn or dusk. You may spot them swimming through the water, leaving their characteristic V behind as they head for favorite feeding spots, or work to collect building materials for their lodges. No matter the season, there is a wealth to explore. See you on the trail!" — **Marjorie Turner Hollman**

[www.marjorieturner.com](http://www.marjorieturner.com)



## Visit [Traillink.com](http://Traillink.com) for more info

### **Assabet River Rail Trail**

**Trail surface:** Asphalt

The best view of the river comes about 0.6 mile past the restored 1921 blue caboose in Hudson. After, the trail plunges into woods that offer a shady canopy as you begin a gentle climb to Marlborough, where you'll cross wetlands around Flagg Brook that serve as a wildlife corridor.

### **Center Trail**

**Trail surface:** Crushed Stone

This short, stone-dust trail uses a long-dormant rail corridor, crossing three restored bridges on its trek through the woods.

### **Cochituate Rail Trail (CRT)**

**Trail surface:** Asphalt, Concrete

Passing near streams and wetlands in Framingham and along the shores of Lake Cochituate in Natick, the scenic trail is a beautiful linear park.

### **Mass Central Rail Trail (Weston Branch)**

**Trail surface:** Asphalt

Heading west from Weston, the 10-foot-wide path travels through forests, fields, wetlands, vernal pools, ponds, and streams to Wayland.

### **Southern New England Trunkline Trail (SNETT)**

**Trail surface:** Asphalt, Ballast, Crushed Stone

Running nearly uninterrupted for 22 miles starting in Franklin, the trail is open and very scenic, though much is currently unimproved with heavy overgrowth best suited to hiking and mountain biking.

### **Upper Charles Trail**

**Trail surface:** Asphalt, Crushed Stone

Shaped like a "V", the trail heading north, past Milford Pond and Louisa Lake Park, is asphalt with great opportunities to see wildlife in the forests and bogs. The northeast branch switches to crushed stone in Holliston, and is described in the adjacent article.

Want to rent a bike for the trail?

### **Assabet River Bicycles**

978-568-0000

90 Cherry St, Hudson

[assabetbicycles.com](http://assabetbicycles.com)



Winter Photo: David Blohm, [blohmphoto.com](http://blohmphoto.com)

# Recreat Areas

**MetroWest Boston has a plethora of outdoor recreation areas; below is a selection of our largest.**

## 1 Marlborough-Sudbury State Forest

711 Main St, Hudson (parking)  
Expansive forest with trails for dog walking, horseback riding, birdwatching, trail running, mountain biking, snowshoeing, and cross-country skiing.

## 2 Memorial Beach

Causeway St, Marlborough  
Ft. Meadow Lake offers boating, swimming beach, playground, and grill areas that are sure to please the whole family.

## 3 Yellick Conservation Area

Hudson St, Northborough  
A hiking and mountain biking trail along the Assabet River featuring unique fishing spots.

## 4 Sudbury Reservoir

Framingham Rd, Southborough  
This beautiful reservoir is known for its fishing, hiking, cross-country skiing, and hunting (in season).

## 5 Callahan State Park

1048 Edmands Rd, Framingham  
800+ stunning acres of parkland with fields, ponds, walking trails, and a dog park.

## 6 Cochituate State Park

43 Commonwealth Rd, Natick  
Three linked ponds where you can boat, swim, fish, hike and more; boat rentals available.

## 7 Whitehall State Park

300 Wood St, Hopkinton  
Stunning park featuring a reservoir where visitors can boat, fish, and hike.

## 8 Hopkinton State Park

164 Cedar St, Hopkinton  
1,500 acres of forest crisscrossed by hiking, skiing, snowmobiling & horseback-riding trails, beaches, fishing, boating, and picnic areas; boat rentals available.

## 9 Ashland Town Forest

Winter St, Ashland  
575-acre calm woodland reserve with wetlands, quarries, and 6+ miles of hiking & biking trails.

## 10 Ashland State Park

156 W Union St, Ashland  
470 acres of recreational space including hiking, biking, boating, swimming, and fishing.

## 11 Barber Reservation

Western Ave, Sherborn  
196-acre reservation where you can walk, ride horses, mountain bike, and ski.

## 12 Lake Winthrop

100 Pleasure Point Rd, Holliston  
A 131-acre Great Pond offering fishing, kayaking, and swimming on two public beaches.

## 13 Hopedale Parklands

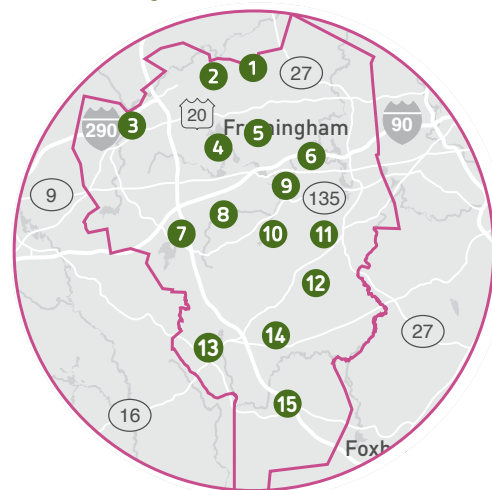
25 Driftway St, Hopedale  
National Historic parklands with 4 miles of winding forest trails, picnic areas, tennis courts, beach, bathhouse, and a boat house.

## 14 Choate Park

7 Oak St, Medway  
Recreation area with tennis courts, playground, walking paths, pond, and picnic.

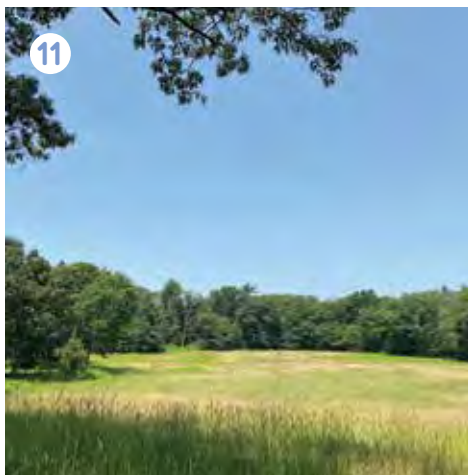
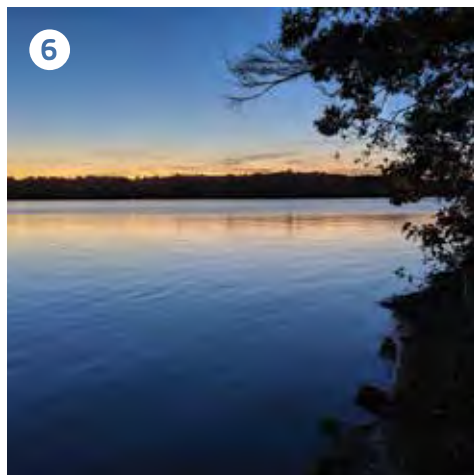
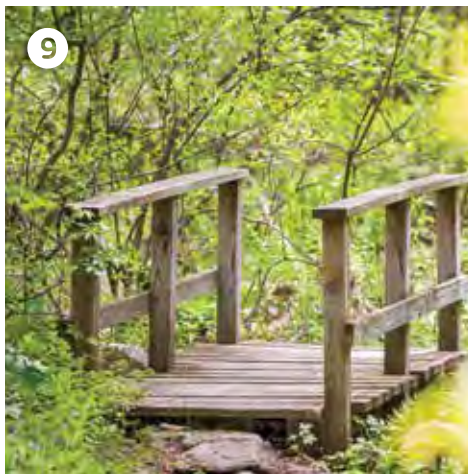
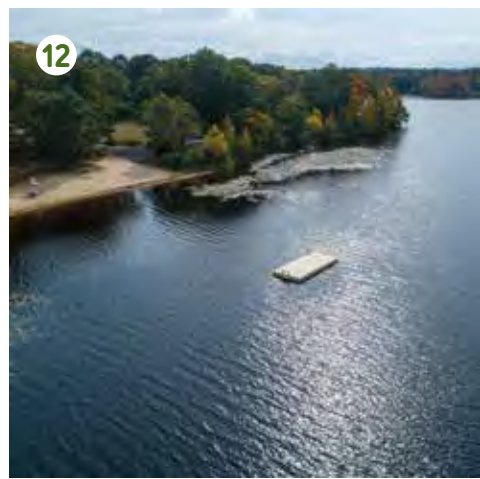
## 15 Franklin State Forest

80 Forge Hill Rd, Franklin  
Unspoiled 843-acre forest with hiking, biking, cross-country skiing & horseback-riding trails.





# ion







# Splash

## PADS + WADING POOLS

Visit one of these great FREE splash pads and wading pools in MetroWest for a fun way for the kids to cool off in the summer!

### BELLINGHAM

#### Silver Lake Park

95 Cross St  
June-Oct, 10am-4pm  
[bellinghamma.org/parks-commission](http://bellinghamma.org/parks-commission)  
Splash pad, playground, and swimming lake with beach (non-motorized sailboats, canoes, kayaks and paddleboards are allowed on the lake)

### HOLLISTON

#### Putts & More

750 Concord St  
April-Oct, 10am-4pm  
[puttsandmore.com](http://puttsandmore.com)  
Splash pad, giant bouncy pillow, and 18-hole golf course (fee-based)

### HUDSON

#### Cellucci Park

15 Houghton St  
June-Labor Day, 9am-7pm  
[hudsonrecreation.recdesk.com](http://hudsonrecreation.recdesk.com)  
Splash pad and playground

### MARLBOROUGH

#### Stevens Park

10 Martin St  
June-Sept, 10am-5pm  
[visit-marlborough.com/splash-around](http://visit-marlborough.com/splash-around)  
Splash pad, baseball field, basketball and tennis courts, and playground

#### Chiloni Park

239 Concord Rd  
June-Sept, 10am-5pm  
[visit-marlborough.com/splash-around](http://visit-marlborough.com/splash-around)  
Splash pad, playground, soccer fields, and woodland nature trails

#### Farrell Wading Pool

85 Sawin St  
June-Aug, 12:00-5:45pm  
[visit-marlborough.com/splash-around](http://visit-marlborough.com/splash-around)  
Wading pool

#### Ward Park Wading Pool

157 Orchard St  
June-Aug, 12:00-5:45pm  
[visit-marlborough.com/splash-around](http://visit-marlborough.com/splash-around)  
Wading pool, sports fields, playground, walking track, skate park, and BMX bike trail

### MEDWAY

#### Choate Park

7 Oak St  
June-Sept, 11am-5pm  
[medwayma.myrec.com](http://medwayma.myrec.com)  
Splash pad, playground, tennis court, walking paths, and pond

### NORTHBOROUGH

#### Assabet Park

20 Gale St  
Memorial Day-Labor Day  
Fri-Mon & Wed, 10am-6pm  
[northboroughma.myrec.com](http://northboroughma.myrec.com)  
Splash pad and toddler playground



## SEASONAL TOURS

# Hub + Spoke

There is not only a lot to see and do in MetroWest, but the region also makes a great home base for day trips around Massachusetts, Rhode Island, Connecticut, and southern Maine, New Hampshire, or Vermont. Called “hub and spoke” tours, these are becoming a popular way to travel—pick a central “hub” as your home base, then travel out to various “spokes” each day.

Because MetroWest is truly the heart of central Massachusetts, we are uniquely positioned to be a convenient and economical hub. We have curated some of the best-of-the-best attractions within a two-hour drive or less, creating fantastic seasonal tours for your enjoyment on the following pages. With each tour we’ve also given you an all-suite hotel—these offer the opportunity to unpack just once during your 10-day to two-week vacation while offering full kitchens and multiple rooms with plenty of space to spread out. Looking for other lodging options? See page 8 for details on all of the region’s hotels. Combine these tours with any of the MetroWest Boston itineraries starting on page 16 for a truly memorable vacation!

Our region is easily accessible from all parts of the globe. See page 10 for details and transportation options for getting here and getting around.



PHOTOS: Top to bottom: Skier/Simon Berger; Chichil Grass Dancer/North American Indian Center of Boston; Champlain Valley, VT/Kevin Davison; The Lobster Pot, Provincetown/Ben Nugent; Nauset Light/Paul Scharff; Salem Peabody Essex Museum/Holly Perry

# 10-DAY HUB & SPOKE TOUR

# Summer

## 1 New England Botanic Garden at Tower Hill

Featuring 18 distinct gardens, an arboretum, preserved woodlands, and miles of walking trails, along with a visitors center offering a charming café, beautiful conservatory, shop, gallery space, and special events.

508-869-6111 • 11 French Dr, Boylston, MA  
[nebg.org](http://nebg.org)

## 2 Tanglewood

Don't miss the iconic Berkshire tradition of picnicking on the sprawling lawn at Tanglewood while listening to the Boston Symphony Orchestra or one of many contemporary artists.

888-266-1200 • 297 West St, Lenox, MA  
[bso.org/tanglewood](http://bso.org/tanglewood)

## 3 Hopkinton State Park

The park's 1,500 acres are crisscrossed by trails around a lake with beaches, stocked fishing, and more. The Boathouse rents sailboats, kayaks, canoes, rowboats, pedal boats, paddleboards, and complimentary beach wheelchairs. The bucolic forest offers hiking, horseback riding, and mountain biking trails.

508-435-4303 • 164 Cedar St, Hopkinton, MA  
[mass.gov/locations/hopkinton-state-park](http://mass.gov/locations/hopkinton-state-park)

## 4 Jacob's Pillow

"The Pillow" is a treasured National Historic Landmark, home to America's longest-running international dance festival offering more than 50 dance companies and 500 free performances, talks, and events each summer, ranging from hip hop to ballet.

413-243-0745 • 358 George Carter Rd, Becket, MA  
[jacobspillow.org](http://jacobspillow.org)

## 5 WaterFire Providence

Wander the shops and galleries of the city then attend WaterFire at night, where fire dancers and fire-tenders in gondolas light over 80 floating bonfires. Walk along the river to enchanting music, stop at a food truck for dinner, and browse the booths of local artisans as aromatic wood smoke and flickering firelight engage the senses.

Waterplace Park • Memorial Blvd, Providence, RI  
[waterfire.org](http://waterfire.org)





## STAY

This all-suite hotel offers the shortest drive time to these attractions  
**RESIDENCE INN BY MARRIOTT BOSTON FRANKLIN**

Studio, 1- & 2-bedroom suites with full kitchens, free full breakfast, and a pool make this hotel a great choice for long summer stays.  
[marriott.com/bosfr](http://marriott.com/bosfr)

6

### 6 Centuries of the Soldier

This August living history event includes historical encampments, demonstrations, and battle re-enactments on the American Heritage Museum grounds with soldiers from the Romans, French & Indian War, Revolutionary War, Civil War, World War I, World War II, Korean War, and Vietnam War.

**978-562-9182 • 568 Main St, Hudson, MA**  
[americanheritagemuseum.org](http://americanheritagemuseum.org)

7

### 7 Boston Paintball

Challenge your friends on one of 3 paintball courses: woods, scenario, or airball. You'll have the time of your life!

**978-261-5046 • 145 Powder Mill Rd, Sudbury**  
[bostonpaintball.com](http://bostonpaintball.com)

8

### 8 Museum of Science & Duck Boat Tour

Spend the day at this constantly innovating museum with more than 700 interactive exhibits and activities that explore all realms of science, from the human body and electricity to Arctic exploration and dinosaurs. Afterwards, catch a Duck Boat tour of Boston, for a unique land/sea ride you'll never forget!

**617-723-2500 • 1 Science Park, Boston, MA**  
[mos.org](http://mos.org) • [bostonducktours.com](http://bostonducktours.com)

9

### 9 Cape Cod Hydrangea Festival

Enjoy this annual Cape-wide celebration of the region's blue, pink, and white signature flowers and everything gardens on Cape Cod! This 10-day July festival includes daily tours of private gardens, each carrying a unique charm.

[capecodhydrangeafest.com](http://capecodhydrangeafest.com)

### 10 Bristol 4th of July Parade

Founded in 1785, Bristol's 4th of July Parade is the oldest Independence Day celebration in the U.S. Over 200,000 spectators arrive in the tiny seaside town to line the 2-mile parade route each July. The parade starts at 10:30am, but arrive early for a good spot to watch the floats, marching bands and performers.

**Hope St, Bristol, RI**  
[fourthofjulybristolri.com](http://fourthofjulybristolri.com)

# 10-DAY HUB & SPOKE TOUR

## Fall

### 1 **Tougas Family Farm**

Make a day of it on the farm! Pick your own apples and pumpkins, visit the barnyard, indulge in a cider donut or other goodie from the farm store, play on the playground, and take a wagon ride around the orchard.

**508-393-6406 • 234 Ball St, Northborough, MA**  
[tougasfamilyfarm.com](http://tougasfamilyfarm.com)

### 2 **MASS MoCA**

Explore the largest contemporary art museum in the U.S. to see renowned works by Sol LeWitt, Laurie Anderson, James Turrell, and more, plus catch concerts and other live performances. Head back to the hotel via **Mount Greylock** for some spectacular fall foliage, then through **Great Barrington** for great antiquing.

**413-662-2111 • 1040 Mass MoCA Way, North Adams, MA**  
[massmoca.org](http://massmoca.org)

### 3 **Yiddish Book Center**

The world's first Yiddish museum is home to extensive exhibits on Yiddish and Jewish culture, as well as a million recovered Yiddish books that offer a window on the past thousand years of Jewish history, a precursor of modern Jewish writing in other languages, and a springboard for new creativity.

**413-256-4900 • 1021 West St, Amherst, MA**  
[yiddishbookcenter.org](http://yiddishbookcenter.org)

### 4 **The Big E (Sept 15-Oct 1, 2023)**

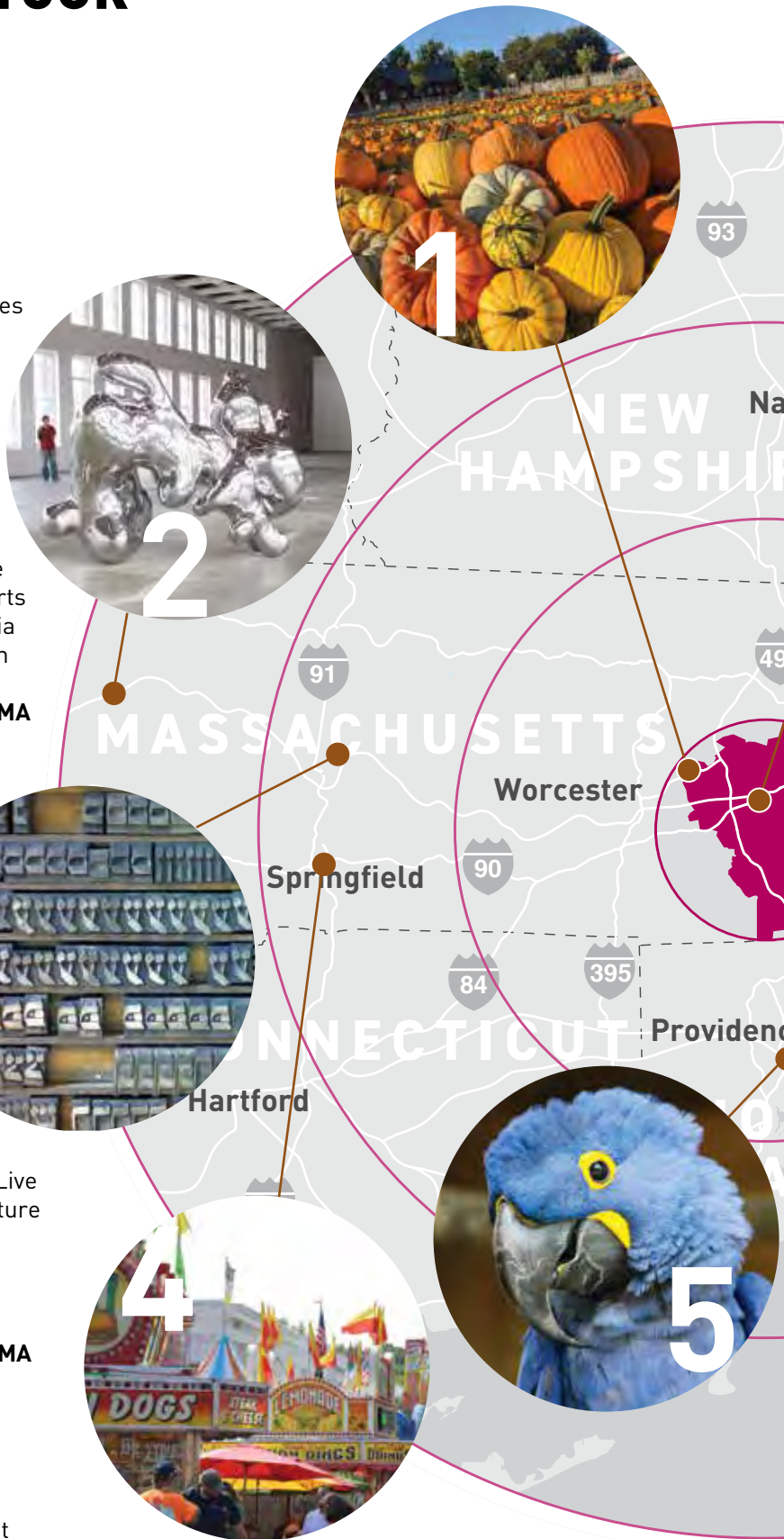
This multi-state fair is like no other in the U.S.! Live music, arts & crafts vendors, farmers market, agriculture displays, Storowtown Village living history museum, competitions, plus the Dingle Peninsula Showcase, highlighting some of Ireland's finest handcrafted products, make for a fun-filled day!

**413-737-2443 • 1305 Memorial Ave, West Springfield, MA**  
[thebige.com](http://thebige.com)

### 5 **Roger Williams Park**

Explore this beautiful zoo, park, carousel, and botanical garden during the day, and the 6,000 carved pumpkins in their Jack-O-Lantern Spectacular at night during the month of October.

**401-785-3510 • 1000 Elmwood Ave, Providence, RI**  
[rwpzoo.org](http://rwpzoo.org)





# STAY

This all-suite hotel offers the shortest drive time to these attractions  
**RESIDENCE INN BY MARRIOTT BOSTON FRAMINGHAM**

Studio, 1- & 2-bedroom suites with full kitchens and free full breakfast make this hotel a great choice for longer stays.  
[marriott.com/bosfm](http://marriott.com/bosfm)

6

## 6 Launch

Weather a little rainy? Let the kids bounce, swing, and jump the day away at Launch, offering laser tag, a ninja course, zipline, trampoline courts, launch pad, battle pit, basketball, slackline, arcade, and indoor playground.

**781-255-5867 • 2 California Ave, Framingham, MA**  
[launchtrampolinepark.com](http://launchtrampolinepark.com)

7

## 7 Salem, MA

From the Salem Witch Museum cataloging the Witch Trials of 1692, to Real Pirates, a museum of pirate history, to The House of the Seven Gables, New England's oldest wooden mansion featured in the book by Nathaniel Hawthorne, to the Peabody Essex Museum, the oldest continually operated museum in the country full of American art, fashion and design, Salem is a mecca for those who love legends and history!

**978-744-1692 • 19½ N Washington Sq, salemwitchmuseum.com**

**978-259-1717 • 285 Derby St, realpiratessalem.com**

**978-744-0991 • 115 Derby St, 7gables.org**

**978-745-9500 • 161 Essex St, pem.org**

8

## 8 New England Patriots Game

A football fan? Take in a Patriots game at Gillette Stadium and see how passionate Pats fans are about the team that's tied for the most Super Bowl wins in NFL history.

**800-543-1776 • 1 Patriot Pl, Foxborough, MA**  
[patriots.com](http://patriots.com)

## 9 Plimoth Patuxet Museums

Explore two living history museums: the Patuxet Homesite, a re-creation of a Native American Wampanoag village with dwellings, gardens, artifacts, and demonstrations by descendants of the area's first inhabitants; and Plimoth, a 17th c. English village where costumed interpreters re-create the experience of living in early colonial America. Visit the reproduction Mayflower, documenting the Pilgrims' voyage, and Plymouth Rock, where they landed.

**508-746-1622 • 137 Warren Ave, Plymouth, MA**  
[plimoth.org](http://plimoth.org)

## 10 Plainridge Park Casino

The state's only gaming casino and live harness-racing track (Apr-Nov). An incredibly exciting and friendly entertainment experience with over 1,200 slots, from traditional to cutting-edge games, live entertainment, and fine dining.

**508-576-4500 • 301 Washington St, Plainville, MA**  
[plainridgeparkcasino.com](http://plainridgeparkcasino.com)



# 10-DAY HUB & SPOKE TOUR

## Winter

### 1 Wachusett Mountain

With 27 trails, 8 lifts, and a 2006-foot summit, Wachusett is a highly accessible ski resort for all skill levels. Be sure to stop at Bullock Lodge Cider House, near the bottom of Salamander run, for freshly made hot cider donuts, apple turnovers, hot cider and coffee.

**978-464-2300 • 499 Mountain Rd, Princeton, MA**  
**wachusett.com**

### 2 Apex Center

Spend the day at the Apex Center complex, which includes **Apex Entertainment**, with their go-karts, laser tag, bowling, ropes course, bumper cars and more; **Altitude**, with a trapeze swing, rock wall, Wipeout, trampolines, and battle beam; and **Half Axe**, an axe-throwing experience not to be missed!

**21 Apex Dr, Marlborough, MA • altitudemarlboro.com**  
**apexentertainment.com • halfaxe.com**

### 3 Worcester Art Museum

Discover the 38,000 art works dating from antiquity to the present, including early American paintings, Japanese ukiyo-e prints, European Old Masters, and objects from ancient Antioch. Don't miss the Higgins Armory Collection, the 2nd largest collection of arms and armor in the U.S., with pieces from ancient Egypt to 19th c. Japan, and a collection of medieval and Renaissance European steel armor.

**508-799-4406 • 55 Salisbury St, Worcester, MA**  
**worcesterart.org**

### 4 Old Sturbridge Village

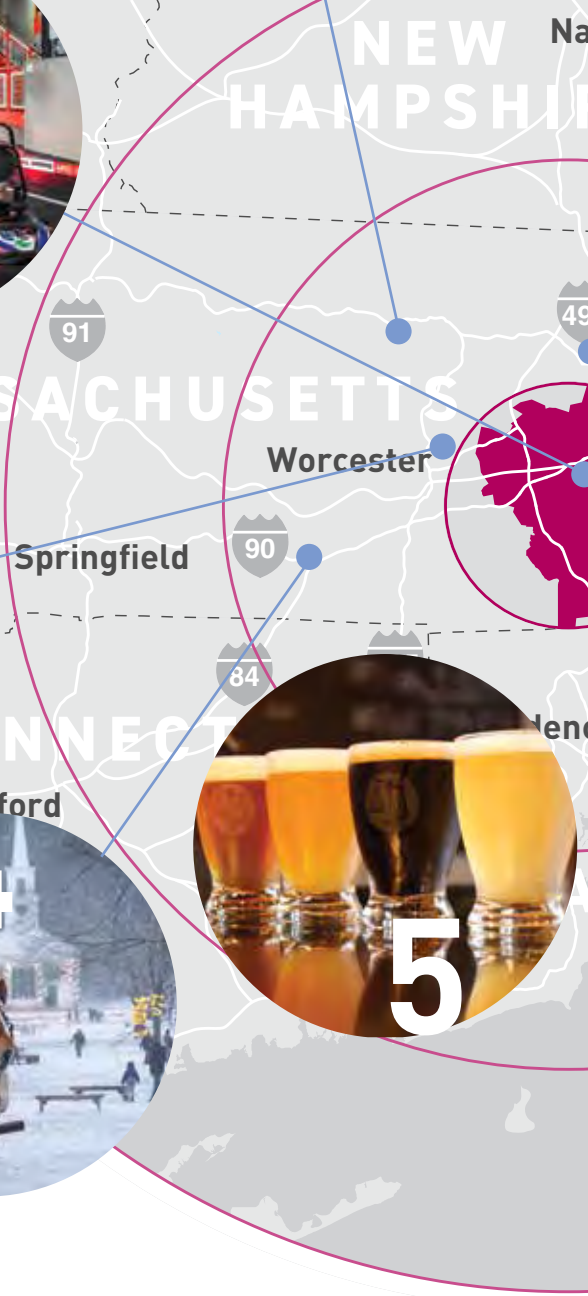
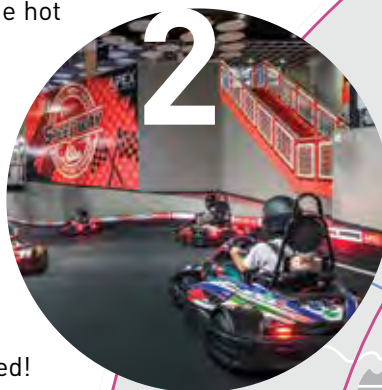
Explore the 200+ acres and 40 historical buildings of this recreated 1830's rural New England town, chat with costumed historians as they work the tasks of the past, and be inspired by the stories of early 19th c. rural life. Beautiful any time of year, "Christmas by Candlelight" offers a unique look at the history of holiday traditions.

**800-733-1830 • 1 Old Sturbridge Village Rd, Sturbridge, MA**  
**osv.org**

### 5 MetroWest Pub Crawl

With 17 craft breweries, cideries, a winery and whiskey distillery, MetroWest is a fantastic region for a pub crawl. Want to do yoga in the brewery? Watch a stand-up comic? Listen to a live band while you sip? Our breweries offer all of that and more!

**See the list on page 15 to plan your tour**





# STAY

This hotel offers one of the shortest drive times to these attractions

## RESIDENCE INN BY MARRIOTT BOSTON NATICK

1-bedroom suites with full kitchens, free full breakfast, and an on-site restaurant make this hotel a great choice for longer stays.

[marriott.com/bosrn](http://marriott.com/bosrn)

6



Portsmouth

7



### 6 Discovery Museum

Hands-on fun that blends science, nature, and play, the museum and its Discovery Woods accessible outdoor nature playscape and 550 sf treehouse feature the best of STEAM learning on a beautiful 4.5 acre campus.

978-264-4200 • 177 Main St, Acton, MA

[discoveryacton.org](http://discoveryacton.org)

### 7 So Sweet Chocolate & Ice Sculpture Festival

Visit the largest ice sculpture festival in MA, with over 25 sculptures on display, live music, and a delectable chocolate scavenger hunt.

[saalemmainstreets.org/festivals/salem-so-sweet](http://saalemmainstreets.org/festivals/salem-so-sweet)

### 8 Blue Hills Reservation

125 miles of scenic trails for beginners to advanced have made this the number one cross-country skiing and snowshoeing destination in MA. The summit of Great Blue Hill provides spectacular views of the city as well as the Blue Hills Observatory & Science Center, a National Historic Landmark offering educational programs and guided hikes. After your hike, stop in to the Trailside Museum, a natural history museum with exhibits of native wildlife.

617-333-0690 • 1904 Canton Ave, Milton, MA

Observatory: [bluehill.org](http://bluehill.org)

Museum: [massaudubon.org](http://massaudubon.org)

8



CAPE COD

### 9 The Enchanted Village

Wander the vintage holiday "village", glide on the indoor ice rink, try your hand at Reindeer Games, watch The Polar Express in 4-D or a holiday laser light show, and go tubing on the indoor mountain—it's a ton of winter fun without the cold!

508-580-4900 • 100 Stockwell Dr, Avon, MA

Inside Jordan's Furniture

[jordans.com/enchanted-village](http://jordans.com/enchanted-village)

9



### 10 New Bedford Whaling Museum

In the 19th c., New Bedford was the greatest whaling port and richest city per capita in the world. The museum shares the stories of this vibrant maritime region and its people. Nearby, visitors can tour a whaling merchant's home, the chapel in Moby Dick, and museums focused on art, glass, firefighting, and more.

508-997-0046 • 18 Johnny Cake Hill, New Bedford, MA

[whalingmuseum.org](http://whalingmuseum.org)

10



# 10-DAY HUB & SPOKE TOUR

# Spring

## 1 Fruitlands Museum

Explore this 210-acre landscape housing five collections: the 1820's Fruitlands Farmhouse; the Shaker Museum, the first such museum in the country; the Native American Museum, celebrating the history of indigenous peoples; the Wayside Visitor Center, an education and exhibition space; and the Art Museum. **978-456-3924 • 102 Prospect Hill Rd, Harvard, MA** [thetrustees.org/place/fruitlands-museum](http://thetrustees.org/place/fruitlands-museum)

## 2 Christa McAuliffe Center

Spend a day exploring space! The Center offers a world-class planetarium, the Challenger Learning Center's totally immersive space mission simulation program, and engaging hands-on science exhibits. **508-626-4050 • 100 State St, Framingham, MA** [cm-center.org](http://cm-center.org)

## 3 EcoTarium

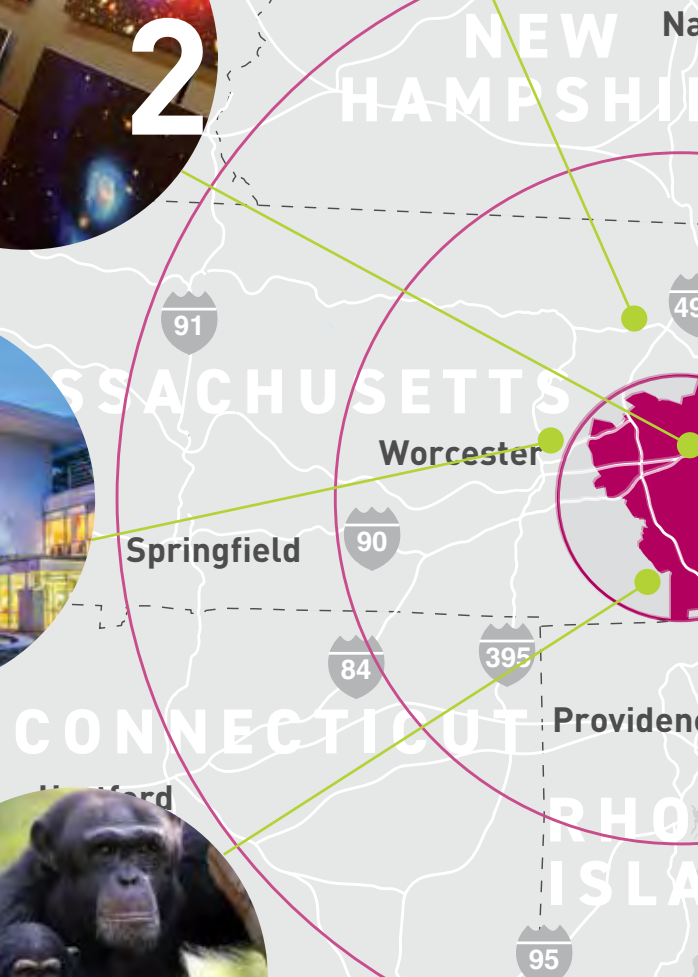
Explore indoor interactive exhibits, live animal habitats, daily Science Discovery programs, hikes through forest and meadow nature trails, outdoor imaginative play, and a train ride (seasonal) around the 45+ acre campus. **508-929-2700 • 222 Harrington Way, Worcester, MA** [ecotarium.org](http://ecotarium.org)

## 4 Southwick's Zoo

So much to see and do! New England's largest zoo is home to over 850 animals in naturalistic habitats including lions, tigers, giraffes, chimpanzees, white rhinos, two-toed sloths, and more. Enjoy live shows, the Soaring Eagle Zipline, and the Skyfari Sky Ride. **508-883-9182 • 2 Southwick St, Mendon, MA** [southwickszoo.com](http://southwickszoo.com)

## 5 Mystic Seaport Museum

The Museum includes the largest historic watercraft collection in the U.S. plus a recreated, interactive 19th c. seaport village—from shipsmiths and coopers to woodcarvers and riggers, discover how America's maritime past shaped life today. Buy the Mystic Pass Card for joint admission to the Mystic Aquarium. **860-572-0711 • 75 Greenmanville Ave, Mystic, CT** [mysticseaport.org](http://mysticseaport.org)





# STAY

This hotel offers one of the shortest drive times to these attractions

## RESIDENCE INN BY MARRIOTT BOSTON MARLBOROUGH

Studio, 1- & 2-bedroom suites with full kitchens and free full breakfast make this hotel a great choice for longer stays.

[marriott.com/bosmb](http://marriott.com/bosmb)

6



Portsmouth

7



6

### Museum of Fine Arts, Boston

One of the largest art museums in the world, the MFA is home to over 450,000 works of art. From ancient Egyptian artifacts to European Old Masters, French Impressionism to imperial Chinese ceramics, musical instruments to Native American art, you can spend an entire day exploring.

**617-267-9300 • 465 Huntington Ave, Boston, MA**  
[mfa.org](http://mfa.org)

7

### Boston Ballet

This internationally renowned ballet company presents a broad repertoire of works, including timeless classics and innovative contemporary pieces by some of today's most groundbreaking choreographers. Take the short walk to Boston Common before or after the performance to ride the iconic Swan Boats and see the glory of 25,000 tulips in bloom.

**617-695-6955 • 539 Washington St, Boston, MA**  
[bostonballet.org](http://bostonballet.org)

8



8

### Arnold Arboretum

With 400+ plants, the Arboretum has one of the biggest lilac collections in North America. While open daily, Lilac Sunday (May 12) offers a unique visit with tours, hands-on children's programs, and more; picnicking is permitted on this day only.

**617-524-1718 • 125 Arborway, Boston, MA**  
[arboretum.harvard.edu](http://arboretum.harvard.edu)

9

### Hyannis Whale Watcher Cruises

Cape Cod is a world-class whale watching destination! See humpback, finback, and minke whales, seals, seabirds and dolphins at Stellwagen Bank during this cruise of a lifetime. Afterwards, wander the quaint shops and beautiful beaches of the Cape.

**508-362-6088 • 269 Millway, Barnstable, MA**  
[whales.net](http://whales.net)

9



10

### Newport Mansions

From the soaring marble columns that greet you at Marble House to the Baccarat Crystal chandeliers in The Breakers dining room, hear the fascinating Gilded Age stories of people who lived and worked in these spectacular mansions referred to as "cottages" by their original owners, then head to America's Cup Avenue to browse the waterfront shops of this historic seaside town.

**Newport, RI • [newportmansions.org](http://newportmansions.org)**

10



**“Farm-to-Table” is more than a trendy foodie term, it’s the mouthwatering marriage that can form between a restaurant and a producer.**

It’s a commitment to quality and community which allows you to trace food to its source, deepening knowledge and appreciation of what’s available just miles from your plate. Many local restaurants offer farm-to-table experiences that invite you to get up close and personal with the abundance of local ingredients harvested in our region.

So where can you sink your teeth into some locally curated farm-to-table offerings in MetroWest? You can’t get closer to the source than at Tangerini’s Farm in Millis, which produces many of the ingredients they serve at their on-site restaurant **The Farmer’s Porch**. Enjoy

bright, colorful plates inspired by the ever-changing bounty of their fields while taking in the sights and sounds of their expansive 60+ acre farm.

Another fresh favorite is **The Farmer’s Daughter** in Sudbury where you can find locally-sourced, creative comfort food, prepared by (you guessed it!) an actual farmer’s daughter. The restaurant is committed to creating and nurturing mutually-beneficial relationships with local small providers. By searching out the best organic, fresh, and sustainable ingredients, thoughtfully prepared, The Farmer’s Daughter follows through on the farm-to-table mission inspired by a childhood filled with family and friends gathering for shared meals.

# Farm to Tab

## Farmers Markets

### ASHLAND

**Ashland Farmers Market**  
ashlandfarmersmarket.org  
June to Oct, Sat 9am-1pm  
125 Front St

### BELLINGHAM

**Bellingham Farm Stand**  
f @BellinghamFarmStand  
June to Oct  
Fri 2-6pm & Sat 10am-2pm  
200 Center St

### FRAMINGHAM

**Framingham Farmers Market**  
chooseframingham.com  
June to Sept, Thurs 3-7pm  
Centre Common,  
Edgell Rd & Vernon St

**Hanson’s Farm**  
hansonsfarmframingham.com  
May to Dec, Mon-Fri 10am-5pm  
Sat 9am-6pm, Sun 9am-5:30pm  
20 Nixon Rd

### FRANKLIN

**Franklin Farmers’ Market**  
franklinfarmersmarketma.com  
June to Oct, Fri 2-6pm  
Town Common, High & Main St

**Fairmount Fruit Farm & Farmers Markets**  
fairmountfruit.com  
Farm stand: year-round  
Daily, 9am-5pm  
Winter market: Dec-Apr  
every other Sat 10am-2pm  
887 Lincoln St

**Night Owl Farm**  
night-owl-farm.square.site  
May: Sat & Sun 10am-4pm  
June to Oct: Sat & Sun  
10am-4pm, Tues 1-7pm  
49 Prospect St

### HOLLISTON

**Arcadian Farms**  
arcadianfarms.com  
Year-round, Daily, 9am-7pm  
258 Norfolk St

### HOPKINTON

**Hopkinton Farmers Market**  
hopkintonfarmersmarket.com  
June to Oct, Sun 1-5pm  
Town Common,  
Route 135 at Ash St  
Fall/Spring Market, Sat 10-2pm  
Weston Nurseries  
93 East Main St

### HUDSON

**Hudson Farmers Market**  
f @HudsonFarmersMarket  
June to Sept, Tues 3:30-6:30pm  
Town Hall, 78 Main St

### Ferjulian’s Farm

ferjulians.com  
June to Oct  
Mon-Sat 9am-6pm, Sun 12-6pm  
7 Lewis St

### MARLBOROUGH

**Marlborough Farmers Market**  
lostshoebrews.com/  
farmers-market  
June to Oct, Sat 9am-1pm  
Behind City Hall, 19 Weed St

### MEDWAY

**Medway Farmers Market**  
f @themedwayfarmersmarket  
June to Sept, Thur 4-7pm  
Choate Park

**Medway Community Farm**  
medwaycommunityfarm.org  
April to Dec, Thurs & Fri 12-6pm  
Sat & Sun 10am-4pm  
50 Winthrop St



Then there's **Buttercup** in Natick, sister restaurant to **The Farmhouse** in Needham, both owned by husband-and-wife chefs who wanted to create restaurants that were all about living off the land. Much of the produce comes from their own farm, and their ever-changing menu celebrates that just-picked farm-to-table flavor.

How's that for dedication to full-circle experiences? We are grateful to have such thoughtful chefs and farmers producing food in MetroWest, informed by their life's passion for freshness and sharing. **Happy eating!**

## FARM TO TABLE RESTAURANTS

- **Buttercup** [eatbuttercup.com](http://eatbuttercup.com)
- **C'est La Vie Bistro** [cestlaviebistro.net](http://cestlaviebistro.net)
- **The Farmer's Daughter** [thefarmersdaughtereaston.com](http://thefarmersdaughtereaston.com)
- **Heritage of Sherborn** [heritageofsherborn.com](http://heritageofsherborn.com)
- **Kith and Kin** [kithandkinhudson.com](http://kithandkinhudson.com)
- **Lookout Farm** [lookoutfarm.com](http://lookoutfarm.com)
- **The Farmer's Porch** [tangerinisfarm.com](http://tangerinisfarm.com)



Stop by one of these fantastic farmers markets or farm stands for delicious local produce, meats, eggs, and baked goods. Many markets also include live music and entertainment, as well as regional artisans selling hand-crafted goods in addition to foodstuffs.

### The Pumpkin Farm

[thepumpkin.farm](http://thepumpkin.farm)  
June-Oct, self-serve  
72 Milford St

### MILFORD

#### Milford Farmers Market

[milfordfarmersmarket.wordpress.com](http://milfordfarmersmarket.wordpress.com)  
June to Sept, Sat 9am-1pm  
Milford Water Co., 66 Dilla St

### MILLIS

#### Tangerini's Farm

[tangerinisfarm.com](http://tangerinisfarm.com)  
May to Dec, Daily 9am-7pm  
139 Spring St

### NATICK

#### Natick Farmers Market

[natickfarmersmarket.com](http://natickfarmersmarket.com)  
Sat 9am-1pm  
Spring/Summer:  
Natick Common, Rts 27 & 135  
Fall/Winter: 13 Common St

### Belkin Family Lookout Farm

[lookoutfarm.com](http://lookoutfarm.com)  
Year-round, Tues-Sun  
89 Pleasant Street

### Natick Community Organic Farm

[natickfarm.org](http://natickfarm.org)  
Year-round, Daily, 8:30am-6pm  
117 Eliot St

### NORTHBOROUGH

#### Berberian's Farm

 @Berberians-Farm  
June & Nov, Mon-Sat 9am-6pm  
July-Oct: Mon-Sat 9am-7pm  
Sun 10am-6pm  
68 Otis St

#### Davidian's Farm Market

[davidiansfarm.com](http://davidiansfarm.com)  
Year-round, Mon-Fri 9am-6pm  
Sat-Sun 9am-5:30pm  
500 Church St

### Tougas Family Farm

[tougasfamilyfarm.com](http://tougasfamilyfarm.com)  
June to Oct, Sun-Thurs  
8am-5pm, Fri-Sat 8am-8:30pm  
234 Ball St

### SHERBORN

#### Dowse Orchards

[dowseorchards.com](http://dowseorchards.com)  
May to Dec, Daily 9am-6pm  
98 North Main St

#### Sunshine Farm

[sunshinefarmma.com](http://sunshinefarmma.com)  
May to Oct, Daily 9am-6pm  
41 Kendall Ave

#### Wild Robbins Farm

[wildrobbinsfarm.com](http://wildrobbinsfarm.com)  
May to Nov, Fri 2-6pm  
42 Everett St

### SOUTHBOROUGH

#### Chestnut Hill Farm Store

[thetrustees.org/program/trustees-farm-store](http://thetrustees.org/program/trustees-farm-store)  
June to Oct, Tues, Thur & Fri  
12-6pm, Sat 10am-4pm  
5 Chestnut Hill Rd

### WAYLAND

#### Wayland Farmers Market

[russellsgc.com/farmersmarket](http://russellsgc.com/farmersmarket)  
June to Oct, Wed 12-4pm  
Jan to Mar, Sat 10:30am-2pm  
Russell's Garden Center  
397 Boston Post Road

### WESTBOROUGH

#### Westborough Farmers Market

[westboroughfarmersmarket.com](http://westboroughfarmersmarket.com)  
June to Oct, Thur 2-6pm  
Congregation B'nai Shalom  
117 East Main St

#### Nourse Farm

[noursefarm.com](http://noursefarm.com)  
May to Dec, Daily 9am-6pm  
80 Nourse St

## BUT WAIT...THERE'S MORE!

MetroWest Boston offers a lot of fun, no matter the season! If you're looking for other itineraries and ideas for your vacation or staycation, check out the following on our website...

# Seasonal



Scan this QR code to see new itineraries posted every month or two on our site, and discover all the new attractions MetroWest has to offer!



# Girls weekend

Need a fun, relaxing weekend with your besties? This itinerary will definitely fit the bill! Enjoy...

- Beating the clock in an escape room challenge
- Bringing the house down with your fabulous karaoke
- Hiking with adorable goats
- Indulging in some much-needed shopping therapy
- Trying a flight at a local craft brewery
- Exploring your creative side
- Ending your vaca with a trip to a salt room



# Romance



Enjoy some quality time to recharge and rejuvenate your relationship with your loved one during this romantic getaway featuring:

- Relaxing couple's spa treatment
- Delicious farm-to-table cuisine
- Beautiful outdoor hikes
- Charming boutique shopping
- Exciting live performances



# Sip + play

We've created a fantastic Hops, Grapes, & Barrels tour for you, complete with awesome activities in between your flights—grab some friends and see what talented brewers we have in MetroWest!



- Play some sand volleyball
- Hike or bike on one of our rail trails
- Take in some live entertainment
- Try your hand at virtual golf
- Sample flights from 8 different local breweries, plus a cidery, winery, and distillery!

- Test your brain with physical and mental challenges

# Family fun

No matter the season, everyone wants a little fun time with the fam! Enjoy this MetroWest itinerary, complete with:

- Biking on one of the region's rail trails
- Challenging each other at an escape room
- Watching a new movie release
- Groovin' at the roller rink
- Competing on a disc golf course
- Bouncing at a trampoline park



# Annual Events

## FALL / WINTER

### ASHLAND

- Ashland Day
- Dragonfly Festival
- FallFest
- Holiday Stroll
- Illuminate Downtown Ashland

### BELLINGHAM

- Annual Fall Fair

### FRAMINGHAM

- Joe Val Bluegrass Festival
- Winter Wonderland

### FRANKLIN

- Harvest Festival

### HOLLISTON

- Celebrate Holliston
- Harvest Fair
- Holliston Farm Day

### HOPEDALE

- Downtown Winter Stroll
- Scarecrow Fest

### HOPKINTON

- Hopkinton PolyArts Festival

### HUDSON

- Celebrate Hudson
- Holiday Stroll
- Rec Fest

### MARLBOROUGH

- Fall Paradise City Arts Festival
- Food Truck & Arts Festival
- Greek Festival
- Labor Day Celebration

### MEDWAY

- Fall Festival
- Pumpkin Walk

### MILFORD

- October Fest

### NATICK

- Holiday Lighting and Stroll
- Natick Days
- PorchFest
- Spooktacular

### NORTHBOROUGH

- Applefest

### SOUTHBOROUGH

- Heritage Day

### SUDBURY

- Colonial Faire and Fife & Drum Muster
- Fall Fest
- Sudbury Historical Society Holiday Village

### WAYLAND

- Wayland XC Festival

### WESTBOROUGH

- Arts in Common

## SPRING / SUMMER

### ASHLAND

- Ashland Rainbow: Celebration of Pride
- CultureFest

### FRAMINGHAM

- Earth Day
- Festa Junina
- JuneteenthFest
- Taste of MetroWest

### FRANKLIN

- Celebrate with Pride
- 4th of July Celebration Weekend
- Ladybug Trail Spring Walk
- Strawberry Stroll

### HOLLISTON

- Downtown Spring Market
- Holliston Lions Carnival

### HOPEDALE

- Fairy Walk

### HOPKINTON

- Boston Marathon
- Holi Festival of Colors
- Hopkinton Pride Parade

### HUDSON

- ArtsFest Hudson
- Centuries of the Soldier
- Hudson Fest
- Tanks, Wings, & Wheels

### MARLBOROUGH

- Brazil Fest
- Spring Paradise City Arts Festival

### MEDWAY

- Celebrate Medway Day
- Earth Day Celebration
- Pixie Festival

### MILFORD

- Celebrate Milford Festival

### MILLIS

- Summer Carnival

### NATICK

- Art in the Park
- ArtWalk
- Earth Day
- Holi Festival
- Juneteenth Festival
- Multicultural Day
- Natick Nights

### NORTHBOROUGH

- Northborough CultureFest

### SHERBORN

- Sand Sculpture Contest
- Sherborn Arts & Crafts Fair

### SOUTHBOROUGH

- Southborough Food Truck Festival
- Summer Nights

### WAYLAND

- Multicultural Festival







Celebrate with Pride — Franklin



Colonial Faire and Fife & Drum Muster — Sudbury



**MORE INFO**

visit  
**[metrowestvisitors.org/events](https://metrowestvisitors.org/events)**  
for dates and detailed  
information on these and  
many other events, or  
scan the QR code.

Fairy Walk — Hopedale



Paradise City Arts Festival — Marlborough





# Event Venues

MetroWest Boston has a plethora of event venues to host your wedding, bar or bat mitzvah, quinceañera, party, or corporate event!



## BELLINGHAM

### Christalight Auditorium and Event Hall

844-495-4448

799 S. Main St #18

[christalightevents.com](http://christalightevents.com)

### Maplegate Country Club

508-966-4040

160 Maple St

[maplegate.com](http://maplegate.com)

### New England Country Club

508-883-2300

180 Paine St

[newenglandcountryclub.com](http://newenglandcountryclub.com)

## FRAMINGHAM

### ātac: downtown arts + music

508-405-2787

160 Hollis St

[atac160.org](http://atac160.org)

### Village Hall on the Common

508-626-9091

2 Oak St

[villagehallonthecommon.org](http://villagehallonthecommon.org)

## FRANKLIN

### Franklin Country Club

508-528-6110

672 East Central St

[franklincc.com](http://franklincc.com)

## HOLLISTON

### Holliston Historical Society

508-429-5795

547 Washington St

[hollistonhistoricalsociety.org](http://hollistonhistoricalsociety.org)

### Holliston Upper Town Hall

508-429-0608

703 Washington St

[townofholliston.us](http://townofholliston.us)

### Pinecrest Golf Club

508-429-4848

212 Prentice St

[anthonysonthegreen.com](http://anthonysonthegreen.com)

## HOPEDALE

### Hopedale Country Club

508-473-1443

90 Mill St

[hopedalecc.com](http://hopedalecc.com)

## HOPKINTON

### 1790 Stone Manor

508-293-1124

47 East Main St

[1790Stonemanor.com](http://1790Stonemanor.com)

### Hopkinton Center for the Arts

508-435-9222

98 Hayden Rowe St

[hopartscenter.org](http://hopartscenter.org)

### Hopkinton Country Club

508-435-4630

204 Saddle Hill Rd

[hopkintoncc.com](http://hopkintoncc.com)

## HUDSON

### American Heritage Museum

978-562-9182

568 Main St

[americanheritagemuseum.org](http://americanheritagemuseum.org)

## MARLBOROUGH

### Apex Entertainment

508-251-8666

21 Apex Dr

[apexentertainment.com](http://apexentertainment.com)

### Marlborough Country Club

508-485-1660

200 Concord Rd

[marlboroughcc.com](http://marlboroughcc.com)

### New England Sports Center

508-229-2700

121 Donald Lynch Blvd

[nes.com](http://nes.com)

### Red Balloon Events Party Hall

857-266 9972

496 Boston Post Rd E

[red-balloon-events.com](http://red-balloon-events.com)

## MEDWAY

### Thayer Homestead

508-321-4800

2B Oak St

[townofmedway.org/thayer-homestead](http://townofmedway.org/thayer-homestead)

## MILFORD

### Memorial Hall

508-478-1119

30 School St

[mcs.milford.ma.us/rent-memorial-hall-next-event](http://mcs.milford.ma.us/rent-memorial-hall-next-event)

## NATICK

### The Beach House

619-549-0000

18 Tech Cir

[beachhouseboston.com](http://beachhouseboston.com)

## NORTHBOROUGH

### Juniper Hill Golf Course

508-393-2444

202 Brigham St

[juniperhillgc.com](http://juniperhillgc.com)

## SHERBORN

### Sherborn 1858 Townhouse

508-655-2701

3 Sanger St

[1858townhouse.com](http://1858townhouse.com)

## WAYLAND

### Sandy Burr Country Club

508-358-7211

103 Cochituate Rd

[sandyburr.com](http://sandyburr.com)

## WESTBOROUGH

### Westborough Golf Club

508-366-9947

121 W Main St

[westboroughgolfclub.com](http://westboroughgolfclub.com)

### Yusra Venues

508-603-1294

45 Oak St

[yusravenues.com](http://yusravenues.com)



# Welcome to Massachusetts!

Enjoy the year-round choices a Massachusetts getaway offers you! Stunning natural beauty, quaint villages, fascinating arts & culture, history & heritage plus exceptional fresh-caught and fresh-grown cuisine; beaches, lakes, mountains and 1,500 miles of coastline. Learn about our incredible innovations and rich academic scene with 110 colleges and universities. Explore the 16 tourism regions and hidden gems of the Commonwealth. Plan your getaway today at [visitma.com](http://visitma.com).

## EXPLORE:

- **Massachusetts Travel Guide:** [visitma.com/guide](http://visitma.com/guide)
- **Massachusetts Wine & Cheese Trails:** [visitma.com/wineandcheesetrails](http://visitma.com/wineandcheesetrails)
- **Historic Women Trailblazers of Massachusetts:** [visitma.com/trailblazers](http://visitma.com/trailblazers)
- **Massachusetts Lighthouse Trail:** [visitma.com/lighthouse-trail](http://visitma.com/lighthouse-trail)
- **Massachusetts Sports Trail:** [visitma.com/sportstrail](http://visitma.com/sportstrail)



**MASSACHUSETTS**  
[visitma.com](http://visitma.com)



## Natick Center Cultural District

There's much to do and see in Natick Center throughout the year, from dining to shopping to public art and events.

Find out what's happening this and every week at [natickcenter.org](http://natickcenter.org).



## ► Where Many Worlds Meet ►



[mfa.org](http://mfa.org) ► Join us at @mfaboston ► Plan your visit at [mfa.org](http://mfa.org) ► Join us at

# MFA Boston

**BEST OF BOSTON 2023**



# Coming Soon

**Marriott Tri Brand Hotel & Event Complex in Framingham**

  
**SHERATON**  
Framingham  
Hotel & Conference Center

**Fairfield<sup>®</sup>**  
BY MARRIOTT  
BOSTON / FRAMINGHAM

**TOWNEPLACE  
SUITES<sup>®</sup>**  
BY MARRIOTT  
BOSTON / FRAMINGHAM

For more information, contact the Sales Team at [info@framinghamtribrandhotel.com](mailto:info@framinghamtribrandhotel.com)

*"Easily in the Top 10  
Museums I've ever been to."*

- Google Review



**American  
Heritage  
Museum**



**1944  
CLASH OF STEEL**

1944-45  
BATTLE OF THE BULGE

Museum Open  
Wed. - Sun.  
10 AM to 5 PM

Scan QR for  
website.



**568 Main Street, Hudson, MA [www.AmericanHeritageMuseum.org](http://www.AmericanHeritageMuseum.org) (978) 562-9182**





## THE LEARNING CENTER FOR THE DEAF



***The Learning Center for the Deaf*** offers a range of community-based services that benefit children, adults and families, including:

- **Audiology Clinic**, offering services across the lifespan to the broader MetroWest community
- **Communication Access Services**, through Interpreting Services and Community ASL Classes

Visit Us at [www.tlcdeaf.org](http://www.tlcdeaf.org)



so much  
♥ so close!

southwickszoo.com



# Southwick's Zoo

MENDON, MA

MORE THAN A ZOO  
... IT'S AN

## Adventure!

The Great  
Jack O'lantern  
Journey



Sept 28 - Oct. 31

Winter  
Wonderland  
*A must see Holiday Spectacular*

Nov 17 - Dec. 31